

MADISON COUNTY.

Map References.

- | | | | |
|----------------------|---|----------------------|---|
| Farm Homes | ■ | Farm Lines | — |
| School Houses | ■ | Private Roads | — |
| Churches | ■ | Public Roads | — |
| Coal Mines | ■ | Haltroads, Projected | — |
| Brick and Lime Kilns | ■ | Haltroads, Completed | — |
| Cemeteries | ■ | Spring and Creeks | — |

POPULATION IN 1870.

Townships	Total Population	Townships	Total Population	Townships	Total Population
Barf	999	Gilgipie	1,085	Shipman	1,517
Blind	1,181	Hilland	1,072	South Palmyra	1,466
Banker Hill	2,584	Hilland	1,072	South Otter	590
Brawley Mount	737	Honey Hill	1,018	Scottsville	1,404
Brighton	1,794	Nilewood	1,211	Shaw's Point	1,040
Carlinville	5,628	North Palmyra	1,213	Stanton	1,600
Chesfield	1,043	North Otter	1,150	Verden (including Girard)	3,075
Colokola	853	Port	643	Western Mount	791
Durchester	917				
Total					34,652

GEOGRAPHICAL.

Madison County lies in the southwest corner of the state, and is bounded on the north by portions of Morgan and Sangamon Counties, east by Montgomery, south by Madison and was by Jersey, and Green. It comprises 84 square miles, or 535,824 acres. The county is drained by several creeks, chief among which are Apple in the northwestern corner; Joe's, Selensons, Swans, Otter, Lick, Bear and Hodge; in the central western portion; Macopin, which crosses the county westward near its center; and Colokola, which has its origin in the southeastern corner.

EARLY SETTLEMENT.

At the period of its organization, Madison County was almost a wilderness. It was one of the finest game regions in the state, and the Osage, Delaware, Kickapoo and Pottawatomie, roamed at will over its prairies. A few hardy pioneers had penetrated the wilds as early as 1816, and established homes for themselves and families. Among these were Seth Hodge, John Lora, Richard Chapman, James Hill, Samuel Lett, George Mackay, David Cook, Joseph Thompson, William W. Wood, Edward McKinley and Ernest Nelson. The first wind blown lumber was exported in 1821, at Carlinville, and it was standing to exhibit the contract now. The first wind blown lumber was exported in 1821, at Carlinville, and it was standing to exhibit the contract now. The first stone, its origin in the southeastern corner. The first stone was exported by the Melchior at Carlinville.

ORGANIZATION.

The territory within the present limits of Madison County, was at first included in Madison, and then formed part of Greene, until organized in 1826. Its name comes from an Indian word, who says, "white potato." The first election took place at the house of Joseph Brough, as also the first session of the county court, which was held April 12, 1829. The Commissioners were, Seth Hodge, Wm. Wilson and Theobald Davis. Truman P. Henry was appointed County Clerk, in addition to which, at that early day, he performed the duties of County Recorder and Circuit Clerk. On April 18, the county was divided into three election districts, of equal size, the northern one being called Apple Creek, the central Macopin, and the southern Colokola. Wm. C. Jones was the first Treasurer and Assessor; John Harris, Sheriff; and David Cook, Coroner. In all the Spring of 1830, the county court was held at private houses. The first court house was a rude log structure, eighteen by twenty-four feet, containing but two rooms, the lower one eight and the upper six feet high. It was the custom of the day for justice to be conducted upon its verities. At this time Judge Samuel A. L. Lockwood held the first court term. In 1832 the log building gave place to a two-story brick edifice, which was used until the completion of the present elegant log court house.

Joseph Brough, was, in 1829, appointed County Surveyor, by the Legislature, and held the county seal.

Madison County received its greatest impetus from the completion of the Alton Railroad in 1852, and from its increasing wealth and population. Careful attention has since the finest universities in the state, and educational and religious advantages are enjoyed by every town.

COUNTY OFFICERS.

The present county officers are, as follows: J. L. Peckler; Clerk, F. M. Maxwell; Circuit Clerk, H. J. W. Burton; Treasurer, J. W. White; Sheriff, J. T. Pennington; State's Attorney, S. T. Cook; Coroner, Peter Home; Superintendent of Schools, J. S. Kenyon; Surveyor, F. C. Winchester.

GEOLOGICAL.

Professor A. H. Worthen, in his report on the Geological Survey of Illinois, says the upper part of the Madison County range is thickened from forty to two hundred feet, their greatest development being restricted to the ancient valleys. The course of Macopin Creek, south and west of Carlinville, appears to govern, in part, one of these valleys. Three miles south of Carlinville a shaft penetrated the bed rock without reaching the bed-rock; one mile southeast of Bender Hill, the shaft of Stanton, there were 120 feet, and in Verden Hill, the shaft of 180 feet, all of them in the Madison range. All the stratified rocks of the county belong to the coal measures, and contain an average thickness of about 200 feet. In the light bed in the thickness, while the shaft on Apple Creek is only from ten to fifteen feet. The coal overlies the Clinton shales in moderate thickness, and has a tendency to break into cylindrical thin shales, which are of the same general character, and is marked by a depth of gray, while that in West's shaft, at Carlinville, has two hundred feet below the surface. The Carlinville limestone outcrops Macopin Creek, and forms the bed of the stream for several miles. One mile west of Stanton this stratum is six feet thick, and lies in one block with the quarried walls. The coal seams in the Wood regular beds, being quarried walls. The coal seams in the Wood River valley is about four feet thick, and lies the feet below the surface.

There are some excellent exposures of macopine sandstone along the banks of Macopin Creek, and silver one was once reported to have been discovered. The lowest exposed strata are an Apple and Hodge Creeks. In the latter place coal ranges out to the bluff, and has, from time immemorial, been used to supply the local demand. The present thickness in elevation, directing the surface drainage of gradually to the west line of the county, the surface level nearly all the streams to the southwest, which the surface level of four hundred feet below the surface.

It will thus be seen that coal underlies the entire area of the county, and Truman P. Henry estimates the amount at over ten million tons. The Carlinville limestone is the most valuable rock of its kind within the county, proving desirable for altars and for building purposes. Two or three miles north of Apple Creek and its tributaries, furnish fair building stone. A band of very pure calcareous sandstone occurs on the Macopin, east of Carlinville, and is well suited for building and is abundant.

SOIL AND TIMBER.

Madison County lies in the heart of the best corn-producing region of the state, and its fertile loam annually grows large crops without the aid of fertilizers. The State Geologist is of opinion that the soil is well adapted to raise the farms of the region might be cultivated for an indefinite period with no serious deterioration.

ation in their productive qualities. The bottom lands are found only along the lower course of Macopin Creek. The banks of all the streams in the county are skirted by fine fields of timber. Upon the uplands, the principal articles are oak and hickory; the level lands are ornamented by ash, lindens, wild cherry, honey locust and black walnut, and the creek bottoms in cottonwood and sycamore.

NATURAL MONUMENTS.

In the eastern portion of the county are several natural mounds, the most curious of which is Coon's, eight miles northeast of Carlinville, which is about forty feet in height and covers an area of several acres. It was originally covered with a heavy growth of oak and hickory, and its interior is evidently yellow gravelly soil.

RAILROADS.

The Chicago and Alton Railroad runs almost diagonally through the county, with eight stations: the St. Louis Division of the Toledo, Walsh and Western penetrates four townships in the southeastern corner, with a station at Stanton; the Indianapolis and St. Louis, crossing the northeastern part, with depots at Bender Hill, Cheschoy, Gilgipie and Clyde; the Western and Northern terminates at Carlinville, and the Chicago and Alton, at the southern terminus at the Jacksonville, Northwestern and Southern terminates at the station.

PRINCIPAL TOWNS.

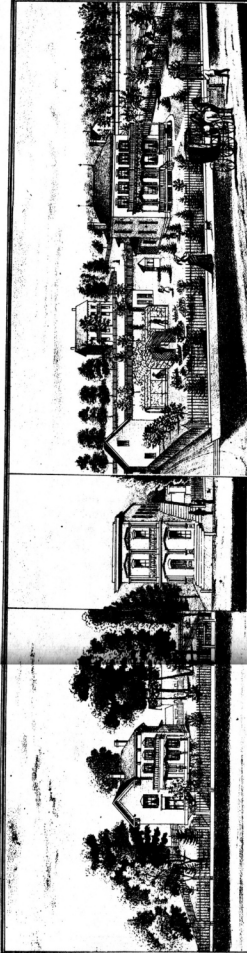
CARLINVILLE the county seat, is the oldest and largest town in the county, having a population of 3,000 in 1870. It is on the Chicago and Alton Railroad, thirty-eight miles from Springfield, and is surrounded by productive farms. Its chief boast is the university founded in 1826, by Rev. George Blair, which has an annual endowment of \$20,000, and an average attendance of two hundred students. The present fine building was erected in 1868. The Carlinville public school cost \$35,000.

BENDER HILL occupies one of the most beautiful situations in the county: a mound rising on all sides, originally known as a mound, and contains about 100 inhabitants. Among its educational features is a fine private academy.

SELECTION one of the older towns, on the Toledo, Walsh and Western Railroad, with a population of about 1,500. VIERDEN, in the northwestern corner of the county, is one of the largest grain-shipping points on the Alton Road, and contains about 1,500 inhabitants.

BRIGHTON is one of the newer railway towns, and is fast increasing in wealth and population. Grain shipments are steadily improving. A fine water works adorns the village. BRIGGINS, a fine village, is situated at the crossing of the Alton and Rockford Roads; has a water cure, numerous churches and a population of 1,000.

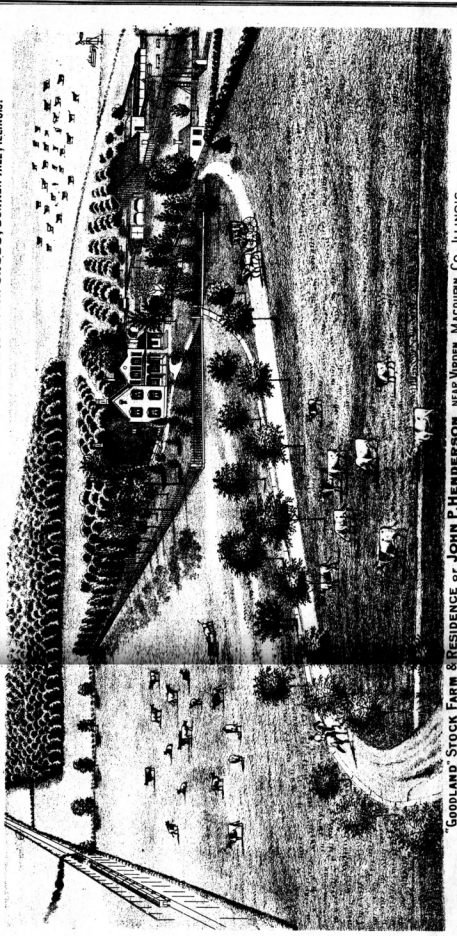
SILWOOD is a town of gun inhabitants, on the Alton Line, and is steadily declining. The other villages are Palmyra and Scottville in the northwestern corner, and Woodbury in the southwestern corner, situated on the Alton and Rockford Roads, with a population of about 200 each.



RESIDENCE OF DR. J. P. MATTHEWS, CARLISVILLE, ILL.

OFFICE OF DR. J. P. AND S. L. MATTHEWS.

RESIDENCE OF F. W. CROSS, BUNKER HILL, ILLINOIS.



GOODLAND STOCK FARM & RESIDENCE OF JOHN P. HENDERSON, NEAR VIRDEN, MACQUIRN CO., ILLINOIS.

PLAN OF THE CITY OF CARLINVILLE

Scale 500 feet to the Inch.

Walker Phelps & Tappert
40

Blackburn University
40

F. Tappert
180,
180.

F. Tappert
180

J. Montgomery
11

L. Wolf
8
B. Bray
10
P. Daniels
10
E. Eason
16

G. L. Brown
11 21.

C. A. Leach
11
S. B. Dwyer
100

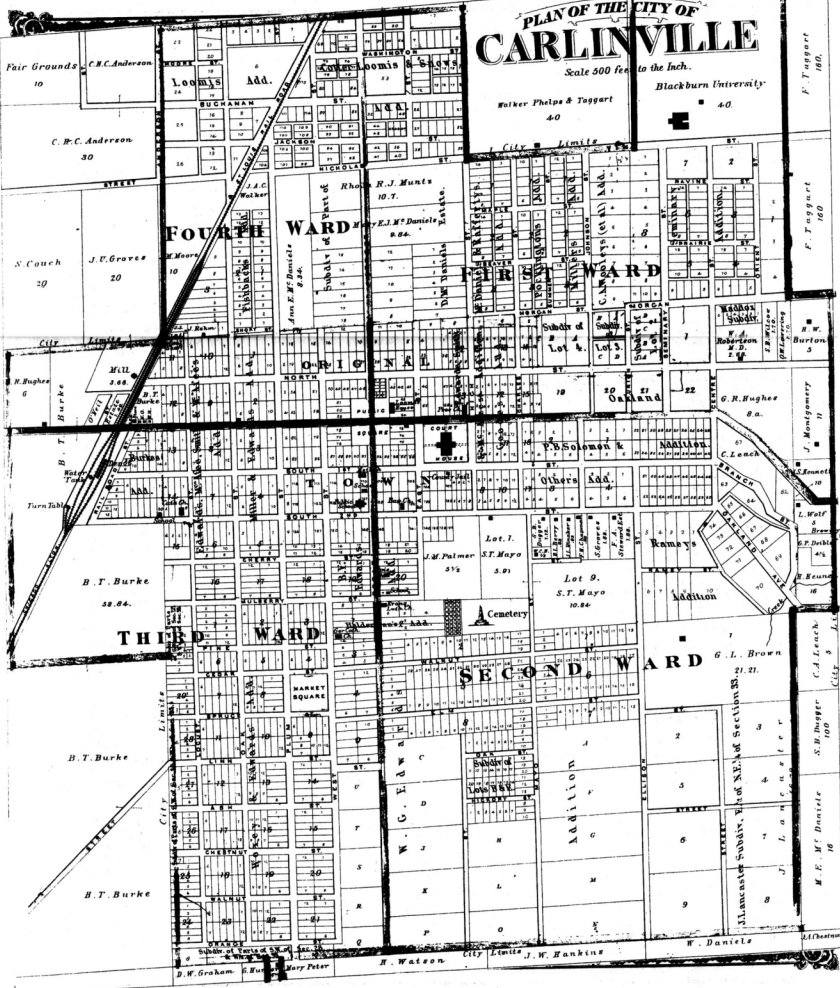
M. E. M. Daniels
18

FOURTH WARD

FIRST WARD

THIRD WARD

SECOND WARD



Subdiv. of ...
J. W. Graham
Mary Peter
H. Watson
City Limits
J. W. Hankins
W. Daniels
J. O'Brien

Carlinville Business References.

L. P. PEEBLES, County Judge.
TROS. M. METCALF, County Clerk.
JAMES H. WOLFE, Deputy County Clerk.
H. W. BURTON, Circuit Clerk.
JOHN W. WILLIS, County Treasurer.
T. S. COREN, Assay's Attorney.
JAS. T. PENNINGTON, County Sheriff.
E. H. DAVIS, Deputy Sheriff.
L. NEWCOMB, Deputy Sheriff.
J. S. KENTON, Superintendent of Schools.
W. H. SNEELING, Attorney at Law and Manager of Missouri County Title Abstract Office.
J. L. PLAIN, Abstract Title carefully examined. Reliable Abstracts furnished at the Office of H. Groin, Court House, Horace Groin, ———— Jacob L. Plain.
HORACE GROIN, Attorney at Law.
W. M. SIEMENS, Proprietor of Loomis House.
JOHN L. KNAKER, Attorney at Law.
W. B. WELSH, Attorney at Law.
M. C. HEAD, Physician.
CARLINVILLE DEMOCRAT, H. M. Kimball, Editor.
VALENTINE & SON, News Agents, Dealers in Books, Stationery, Legal Blanks, Notions, etc.
PETER HEINZ, Dealer in all kinds of Furniture, Upholstery, Parlor Sets, Mirrors, Mattresses, Picture Frames, Coburn, Metallic Cards, etc., at St. Louis prices. A good Repair kept to attend Furniture.
BURKE, DUBOIS & CHESTNUT, (Successors to Chestnut & Dubois), Bankers and Dealers in Exchange.
JAS. K. FURBER, Cashier.
THOMAS WHELLEN, Hotel Keeper near the Depot. Rooms in connection with House.
ANDERSEN & THOMAS, Manufacturers of Carriages, Buggies and Wagons of all kinds, made of seasoned materials. Repairing done to give satisfaction. All work warranted. West Main Street.
SCHOENHERR, JUNGHANS & REIPEMBERG, Manufacturers of Parlor, Sitting Room and Bed Room Suits, Sofas, Lounges, Hair, Moss, Excelsior, Hook and Sea Grass Mattresses and Comforts. All kinds of Looking Glasses, Glass Plates, and every thing usually found in a first-class Furniture Store.
W. F. BURGDORFF, The Great "Bankrupt" is the House for Clothing and Merchant Tailoring. Fine Goods cut free of charge when bought at the Bankrupt Store. Boots, Shoes, Hats, Caps, Etc.'s Furnishing Goods.
J. G. STEWART, Photographer, Glass Pictures in Ink, Oil or Water. Fine assortment of

Frames. Copying a specialty. Dealer in Wash of Square.
W. H. H. HORINE, Dealer in Watches, Clocks, Jewelry, Solid Silver and Plated Ware. Pictographing in connection.
FRED. BEIKENS, Glass and Queensware, Cutlery, Toys, Notions and Jewelry, Confectioner and Baker, Operas, Ice Cream in season.
SHUTZ, PATCHEN & CLARK, Dealers in Dry Goods, Boots, Shoes, Notions, etc. A fine Stock always on hand.
C. S. PATCHEN, Merchant.
P. F. MERRIAM, Apothecary and Druggist. Dealer in Books, Stationery and full line Family Goods. Prescriptions prepared with accuracy.
DALTON & DICKERSON, Dealers in Most of all kinds.
GEO. R. HUGHES, Dealer in Staple and Family Dry Goods, Notions, Carpets, Oil Cloths, Clothing, Boots and Shoes. West Main Street, near Depot.
DR. A. SNYVELL, Former Missouri Surgeon.
JOHN K. BROWN, Attorney at Law, Police Magistrate, Justice of the Peace and Collection Agent.
FRED. HANSTEIN, Barber.
P. CONNELL, Proprietor of City Express.
D. C. & W. H. ROBBINS, Excelsior Soap Works.
L. A. PEEBLES, Dealer in Real Estate.
GEO. HUNTER, Attorney.
GEO. J. CASTLE, Proprietor City Livestock Market.
J. B. LITTON, Farmer and General Trader, Dealer in Real Estate.
FRED. WOLTERS, JR., Manufacturer of all kinds of Saddles, Harness, Hides, Poles, Hoops and Barrels.
JAMES GAUD & CO., Millers.
FREDERIC WOLTERS, SR., Miller.
SAMUEL PITMAN, Attorney at Law.
W. W. FREEMAN, Justice of the Peace, Secretary of Agricultural Society, Old Settlers Association, Hook and Ladder Company.
DUPUY & WARBURTON, Dealers in Groceries of all kinds. Opposite the Square.
C. T. PROUTY, Postmaster.
C. H. RANSOM, Dealer in Boots, Shoes, Rubbers, Slippers. Agent for Singer's Sewing Machine. Remembers the Cheap Shoe Store for bargains. South side of Square.
W. C. HOEHN, Dealer in Jewelry and Millinery.
DALTON & DICKERSON, Dealers in Meats, Hides, Poultry, etc.
WILLIAM WRIGHT, First-class Livestock

JONAS N. GROVE, Milling. Dealer in Stock and General Trader.
C. H. C. ANDERSON, Banker.

A. S. RUARK,
 MANUFACTURER OF
Stoves, Tinware, Spouting, Gutters, Etc.
 DEALER IN
Iron, Hardware, Tinware, Furnace and Stove Tools.
 SPECIALLY ADAPTED FOR STEEL, COAL, IRONSTONE, BRASS, IRON, LEAD, TIN AND POWER SIZES, ETC.

T. H. STEINMEYER & CO., Dealer in Drugs, Medicines and Fancy Notions.
PETER W. LORENYZ, Dealer in Groceries.
VICTOR MYLIUS, Manufacturer of and Dealer in Cigars and Tobacco.
JOHN J. JONES, Dealer in Meats of all kinds. Also Hides, Tallow and Sheep Pelts.
H. DALEY, Wholesale and Retail Dealer in Staple and Fancy Groceries, Provisions, Green Dried and Canned Fruit, Salt, Tobacco, Cans, etc., etc. Will sell Cheap for Cash. Also Ship Smuggling Agents.
ALFRED LANGEMANN, Dealer in Clothing, Gen'l. Furnishing Goods, Hats and Caps. East side of Square.
GUY A. SNELL, Merchant.
ROYAL BASS, Manufacturer of Tomb and Marble.
PATRICK FITZGERALD, Restaurant, First-class in every respect.
DORS. J. & F. L. MATTHEWS, Physicians and Surgeons.
F. L. MATTHEWS, United States Consular Commissioner.
WOODS & BIRD, Dealer in Staple and Fancy Dry Goods, Clothing and Carpets. No. 47 East side of Square.
JOHN DOHOEY, Dealer in Groceries, Fancy Notions, General City Produce, etc.
CYRUS BOHOUKY, Dealer in Choice Family Groceries and Provisions, Queens and Glassware, Cutlery, Notions, etc. West Main Street.
B. M. RUMSDEN, Dealer in Groceries, Cans, Cakes and Groceries, Notions, Feeds of all kinds.
FIRST NAT. BANK, No. 4 East Main Street. J. C. Higgins, Pres.; M. McClure, V. Pres.; M. F. Fint, Cashier.
WOODS & BIRD, Wholesale and Retail Dealers for General Hardware, Hardware and Tinware. We make every thing in our line a specialty. Northwest corner of Square.

BATTISE & HUNTLEY, Manufacturers of and Wholesale and Retail Dealers in Harness, Saddles, Trunks, market price paid for Hides, Tallow and Furs. North side of Square.
T. R. BROWN, Manufacturer of Boots and Shoes of all kinds.
R. TURNBULL, Carpenter, Contractor and Builder.
JOHN LANGCASTER, Manufacturer of Brick and Drain Tile.
J. T. MCCONNELL & SON, Dealers in and Proprietors of all kinds of Nursery Stock, Greenhouse and Heating Plants, Small Fruits, Vines, Shrubs, Evergreens, etc.
G. P. DEIBEL, Manufacturer of Lager Beer.
O. F. HLAAGE, Host Keeper and Dealer in Liquors.
JESSE GROVE, Feed Store and Dealer in Country Produce. Highest price paid for Corn.
JOHN C. MILLER, Merchant.
M. F. WASTZEL, Dealer in Real Estate.
BLACKBURN UNIVERSITY, J. W. Barry, President; A. J. Russell, Professor; R. S. Minion, Prof. of Mathematics and Financial Account; John R. L. Soble, Prof. of Ancient Languages.
CHARLES A. WALKER, Attorney and Counselor at Law.
J. G. KOESTER, Attorney and Counselor at Law. Collections made in Europe and America.
W. S. ANDERSON, Attorney at Law. Special attention given to Collections.
T. S. PHILLIPS, City Marshal.
MATT JOHNSON, Premium Boot and Shoe Manufacturer. Will sell and leave your measure for A No. 1 Boot. Has on hand at all times the best of French Calf. All work warranted. Shop opposite the P. O.
GEORGE E. BRALLEY, Attorney at Law.
JAMES LYNDY, Janitor and Engineer.
JOHN LOGAN, M.D., Physician.
JACOB T. SARGENT, Farmer and Stock Raiser; Vice President of Macoupin County Agricultural Society.
E. S. DOLLIER, Superintendent County Farm and Yarnier.
D. GORE, Farmer and Breeder of Short Horned Cattle and Berkshire Hogs.
AUGUST ZUFFEHL, Manufacturer of Soda Water, Excelsior and Bifida Ginger Ale and Champagne Cider.
JOHN W. DEBNEY, Dealer in Milk, Cream and Butter.
THOMAS H. DENBY, Meat Market.
D. C. DAVIS, Constable.

Patrons' Directory for Macoupin County, Illinois.

CARLINVILLE TOWNSHIP.				CARLINVILLE TOWNSHIP—Continued.			
NAME.	POST-OFFICE.	BUSINESS.	NATIVITY.	NAME.	POST OFFICE.	BUSINESS.	NATIVITY.
John W. Willis	Carlinville	County Treasurer	Macoupin Co., Ill.	R. E. Thomas	Carlinville	Carrage Manufacturer	England
Tros. M. Metcalf		County Clerk	Hopkins Co., Ky.	Geo. Schoenberg		Manufacturer of Furniture	Germany
H. W. Burton		Circuit Clerk	Lincoln Co., Ill.	John Leppner		Manufacturer of Furniture	Germany
W. H. Scrolling		Attorney	Merced Co., Ky.	Henry Reinfelder		Manufacturer of Furniture	Germany
J. L. Plain		Justice of the Peace	Tennessee	W. F. B. Stewart		Photographer	England
Horace Groin		Attorney at Law	Tennessee	Wm. G. Gorman		Farmer	Germany
John L. Knaker		Attorney at Law	Morgan Co., Ill.	J. S. Drew		Merchant	Hanover Co., Mass.
Jas. H. Wolfe		Deputy County Clerk	Greene Co., Ill.	J. S. Hark		Farmer	Washington Co., Ind.
M. H. Welch		Attorney at Law	Jessamine Co., Ky.	J. P. Merriman		Merchant	Ohio
M. C. Head		Physician	Iefferson Co., Ky.	C. S. Patchen		Merchant	Ohio
J. H. Valentine		Assistant Postmaster	Greene Co., Ill.	F. P. Merriam		Merchant	Germany
H. M. Kimball		Editor	Painfield, Mass.	L. Dickerson		Merchant	Macoupin Co., Ill.
Peter Heine		Merchant	London Co., Ky.	John Leppner		Merchant	Germany
A. McKim Dublin		Banker	Baltimore, Md.	Geo. R. Hughes		Merchant	Lackan Co., Tenn.
Jas. K. Furber		Banker	Ill.	John Leppner		Attorney at Law	Germany
Thomas Whellen		Hotel	Ireland	R. A. Savelly		Editor	England, Scotland
Randolph Anderson		Carrage Manufacturer	New Jersey	Fred. Hanston		Barber	Germany

PATRONS' DIRECTORY FOR MACUPIN COUNTY--CONTINUED.

CARLINVILLE TOWNSHIP--Continued.

BUNKER HILL TOWNSHIP.

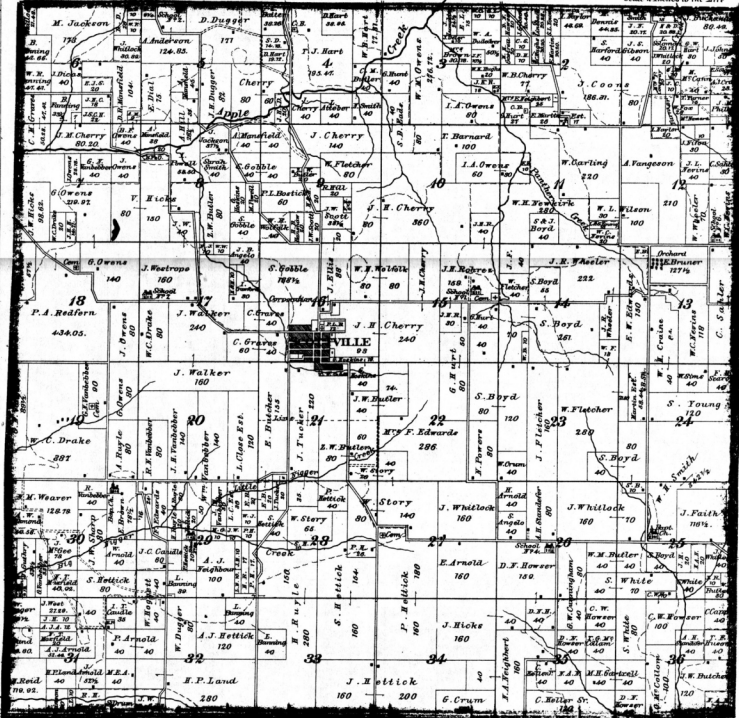
NAME	POST-OFFICE	BUSINESS	NATIVITY	Age in 60s.	NAME	POST-OFFICE	BUSINESS	NATIVITY	Age in 60s.
Thaddeus L. Loomis	Carlville	Farmer and Trader	Herkimer Co. N. Y.	1938	W. Cross	Bunker Hill	Supervisor	England	1866
F. Conolly		City Express	Ill.	1947	J. J. Hedley		Printer	Virginia	1861
D. C. Robison		Soap Manufacturer	Arkansas	1895	Ed. C. Hoaglin		Editor and Publisher and P.M.	Scotland	1874
J. J. Peckler		Farmer	Ill.	1887	Ed. C. Hoaglin		Newspaper	New York	1878
J. P. Peckler		Real Estate	Kentucky	1874	Carlisle		Cashier	Madison Co. Ill.	1849
Geo. J. Peckler		County Judge and Attorney	Macopin Co. Ill.	1875	W. H. H. H. H.		Agricultural Implements	Madison Co. Ill.	1849
Geo. H. Lator		Livery	Litchfield Co. Conn.	1858	E. R. & W. N. Hudd		Merchants	Illinois	1871
Geo. J. Castle		Farmer	Litchfield Co. Conn.	1858	N. Vancay		Attorney	New Hampshire	1867
John Dalton		Farmer & Real Estate Dealer	Macopin Co. Ill.	1867	R. H. Horwood		County Surveyor	Louisiana	1866
Fred. Wolters, Jr.		Manufacturer	Prussia	1868	C. C. Winchester		Physician	Massachusetts	1867
Frederick Wolters, Sr.		Miller	New Jersey	1853	Geo. C. McChesner		Merchant	Honon Co. Ohio	1867
Saml. P. Finner		Justice of the Peace	Pa.	1851	W. H. J. Sanner		Merchant	Vermont	1869
W. W. Freeman		Merchant	Pa.	1848	Max. Ithardt		Hardware	Prussia	1869
Geo. S. Warburton		Merchant	Germany	1860	J. Pennington		Sherriff	Bowser Co. N. J.	1867
Bernhard Dwee		Postmaster	Huron Co. Ohio	1879	Rich. Rammann		Farmer and Merchant	Germany	1846
C. T. Preary		Merchant	Madison Co. Ill.	1871	W. M. Dorsey		Retired	Kentucky	1842
C. H. Ransom		Jeweler	St. Louis, Mo.	1878	E. H. Spangenberg		Grocer	Prussia	1858
C. W. Hoehn		Merchant	St. Louis, Mo.	1871	Th. S. Nilson		Physician	Massachusetts	1868
William Wright		Livery	Merced Co. Ky.	1853	C. T. Barnett		Physician	Ohio	1868
Janus N. Green		Trader	Macopin Co., Pa.	1871	W. A. Walker		Barber	Prussia	1851
C. H. C. Anderson		Banker	Christian Co. Ky.	1854	Geo. Braun		Merchant	Prussia	1867
A. K. Kne		Druggist	Germany	1856	Fred. Flocke		Merchant	Havaria	1871
J. H. Steiner		Druggist	Germany	1856	Ed. C. Hoaglin		Merchant	New York	1867
C. H. Holsenberg		Druggist	Germany	1858	Wm. O. Jencks		Livery	Providence, R. I.	1864
Victor Miles		Lower Dealer	Germany	1869	Wm. O. Jencks		Grain Dealer and Mayor	New Hampshire	1855
John D. Jones		Merchant	Ireland	1842	W. M. Dorsey		Physician	New Hampshire	1859
Alfred Hoff		Merchant	Ireland	1852	Ellis Tye		Retired	New Hampshire	1855
Gay A. Saell		Merchant	Ireland	1864	J. H. Spangenberg		Retired	New Hampshire	1861
Geo. C. Howland		Esquire	Jersey Co. Ill.	1864	John A. Pettigall		Florist	New Hampshire	1830
Royals Hays		Manufacturer of Tomb Stone	Ill. Co. Va.	1847	Hotel		Hotel	England	1871
Patrick Fitzgerald		Physician	England	1866	Floret Agent		Floret Agent	England	1871
F. J. Matthews, M.D.		Physician	England	1866	George Harvey		Farmer	Ohio	1866
J. P. Woods		Grocer	Ireland	1862	A. S. Robinson		Farmer and Dealer in Milk	Ohio Co. Ill.	1873
John Dohony		Grocer	Ireland	1867	R. J. McAdams		Farmer	Ohio Co. Ill.	1867
Clara Bandy		Merchant	Germany	1867	Margaret Cuthbertson		Farmer	Prussia	1864
H. M. Ransom		Merchant	Germany	1867	J. R. McAdams		Farmer	Prussia	1864
M. K. Flint		Cashier First National Bank	Niagara Co. N. Y.	1866	Wm. S. Kays		Farmer	Prussia Co. Ky.	1843
William Farrell		Merchant	Ireland	1842	A. A. Bred		Farmer	St. Louis, Mo.	1864
J. V. Bantier		Harness Maker	Ireland	1850	Jonahban Lucas Wood		Farmer	Washington Co. Tenn.	1883
T. B. Brown		Boots and Shoes	New Hampshire	1846	Jonahban Lucas Wood		Farmer and Fruit Grower	New Hampshire	1859
John Lancaster		Manufacturer of Brick	England	1852	Jonathan Huggins		Farmer	Washington Co. Ill.	1869
J. T. McConnell		Newspaper	Buher Co. Ky.	1852	J. Hollister		Farmer	Connecticut	1864
C. F. Lisciel		Brewery	Germany	1851	C. C. Bonser		Farmer & Road Commissioner	Prussia	1864
G. H. Stigel		Hotel	Pennsylvania	1888	W. N. Zimmerman		Farmer	Germany	1851
Josef Lorey		Real Estate	Washington Co. Ky.	1857	Samsel Smalley	Bunker Hill	Farmer	New Jersey	1848
John C. Miller		Merchant	Indiana	1836	John Patrick	Bunker Hill	Farmer	Scotland	1848
S. F. Nutter		Print. Blackburn University	Ill. Co. N. Y.	1867	Fredrick Mettuck		Farmer & Road Commissioner	Germany	1851
A. J. Russell		Prof. in Blackburn University	Ill. Co. N. Y.	1872	John Goodwin		Farmer	England	1849
K. B. Minton		Prof. in Blackburn University	Ill. Co. N. J.	1868	William A. Burton		Farmer	Virginia	1837
John E. L. Soule		Print in Blackburn University	Comberland Co. Me.	1861	John Quincy Noel		Farmer	Madison Co. Penn.	1861
A. W. Edwards		First National Bank	Nashville, Tenn.	1851	Samuel C. Squire		Farmer	Connecticut	1851
Charles A. Walker		Attorney	Germany	1851	Robert Ridgley		Farmer and Milk Dealer	England	1855
Knoxie J. G.		Farmer and Stock Raiser	Worcester, Mass.	1857	E. Case		Farmer	Massachusetts	1859
Elliot Brady		Farmer	Worcester, Mass.	1857	Wm. H. Davis		Deputy Sheriff and Farmer	Merymack Co. N. H.	1849
John T. Sargent		Super. Post. Farm	Howard Co. Mo.	1866	E. H. Davis				
E. S. Cotler		Druggist	Kentucky	1843					
D. Gure		Farmer and Stock Raiser	Ill.	1843					
W. M. Anderson		Farmer and Stock Raiser	Ill.	1843					
Nathan Lewis		Farmer and Stock Raiser	Simpson Co. Ky.	1853	Chas. A. Woolley	Girard	Farmer and Stock Dealer	Greene Co. Ill.	1865
C. W. Kaston		Farmer	St. Louis, Mo.	1855	Wm. H. Cox	Vinden	Farmer and Stock Raiser	Ill.	1849
J. F. Kasten		Farmer	St. Louis, Mo.	1857	Thos. W. Alderson	Vinden	Farmer and Stock Raiser	Ill.	1849
J. G. Kutzman		Farmer	Hannover, Germany	1857	H. C. Kahle	Vinden	Farmer and Stock Raiser	Ill.	1864
Charles Tustang		Farmer	Ill.	1858	Wm. A. Bricky	Vinden	Farmer and Stock Raiser	Ill.	1866
James McIntyre		Farmer and School Trustee	Macopin Co. Ill.	1858	Chas. M. Wright	Strump Grove	School Trustee	Ill.	1866
T. G. Moore		Farmer and Stock Raiser	Germany	1854	John J. Sims	Vinden	Farmer and Stock Raiser	Ill.	1873
P. G. Schfer		Farmer and Stock Raiser	Germany	1854	J. H. Walker	Vinden	Farmer and Stock Raiser	Ill.	1866
Joseph Schfer		Farmer and Stock Raiser	Germany	1854	Wm. J. Johnson	Strump Grove	Farmer and Stock Raiser	Ill.	1866
Frank Link		Farmer	Ill.	1854	John C. Hochstetter	Strump Grove	Farmer and Stock Raiser	Ill.	1866
P. F. Cressmer		Farmer and Stock Raiser	Germany	1854	William C. Cromp	Vinden	Farmer and Stock Raiser	Ill.	1866
C. Rhoads		Farmer and Stock Raiser	Germany	1854	Robert K. Riderson	Vinden	Farmer and Stock Raiser	Ill.	1866
Thomas Shott		Farmer	Ill.	1854	Christian Oltmann	Girard	Farmer and Stock Raiser	Ill.	1866
Wm. Misher		Farmer	Ill.	1854	James G. Hader, Jr.	Vinden	Farmer and Stock Raiser	Ill.	1866
Geo. E. Bradley		Farmer and Stock Raiser	Ill.	1854	James G. Hader, Jr.	Vinden	Farmer and Stock Raiser	Ill.	1866
W. E. F. Anderson		Attorney	Macopin Co. Ill.	1850	N. Johnston	Strump Grove	Farmer and Stock Raiser	Ill.	1866
August Zupfeld		Manufacturer of Soda Water	Ill.	1846	John C. Hochstetter	Strump Grove	Farmer and Stock Raiser	Ill.	1866
T. S. Phillips		City Marshal	Macopin Co. Ill.	1847	William C. Cromp	Vinden	Farmer and Stock Raiser	Ill.	1866
Michael Kogler		Farmer	Ill.	1848	Robert K. Riderson	Vinden	Farmer and Stock Raiser	Ill.	1866
Arnold Ward		Farmer	Ill.	1848	Christian Oltmann	Girard	Farmer and Stock Raiser	Ill.	1866
Freid. Wachsman		Farmer	Ill.	1848	James G. Hader, Jr.	Vinden	Farmer and Stock Raiser	Ill.	1866
Conrad Heindel		Farmer	Ill.	1848	James G. Hader, Jr.	Vinden	Farmer and Stock Raiser	Ill.	1866
Wm. A. Dohly		Farmer and Stock Raiser	Ill.	1848	James G. Hader, Jr.	Vinden	Farmer and Stock Raiser	Ill.	1866
Michael Gure		Farmer	Kentucky	1843	Knock Hill	Girard	Farmer and Stock Shipper	Ill.	1867
George Lewis		Farmer	Ill.	1843	Knock Hill	Girard	Farmer and Stock Shipper	Ill.	1867
Josef S. Schney		Milk Man	Ill.	1843	Knock Hill	Girard	Farmer and Stock Shipper	Ill.	1867
Thos. E. Henby		Meat Market	Ill.	1843	Knock Hill	Girard	Farmer and Stock Shipper	Ill.	1867
D. C. D. D. D.		Constable	Ill.	1843	Knock Hill	Girard	Farmer and Stock Shipper	Ill.	1867
James Lynch		Engineer	Ireland	1843	Knock Hill	Girard	Farmer and Stock Shipper	Ill.	1867
Matt. Jones		Merchant	Germany	1843	Knock Hill	Girard	Farmer and Stock Shipper	Ill.	1867
John Logan		Physician and Surgeon	Ill.	1843	Knock Hill	Girard	Farmer and Stock Shipper	Ill.	1867

NORTH OTTER TOWNSHIP.

SCOTTVILLE

T.12N.R.0.W. of S.12.E.M.

Scale 2 Inches to the Mile



SCOTTVILLE TOWNSHIP REFERENCES.

- GEO. W. CUNNINGHAM,** Farmer, Mechanic, Miller and Railroad Man. Farming at present. Section 46.
- B. F. OWENS,** Farmer and Stock Raiser, Bricklayer and Plasterer. Section 8.
- CHRISTIAN BAITER,** Farmer and Coal Miner. Section 4.
- W. R. HART,** Farmer, Stock Raiser and School Teacher.
- W. CARLING, SR.,** Coal Miner. Section 10.
- JOHN LYNCH,** Farmer, Stock Raiser and Plasterer. Section 10.

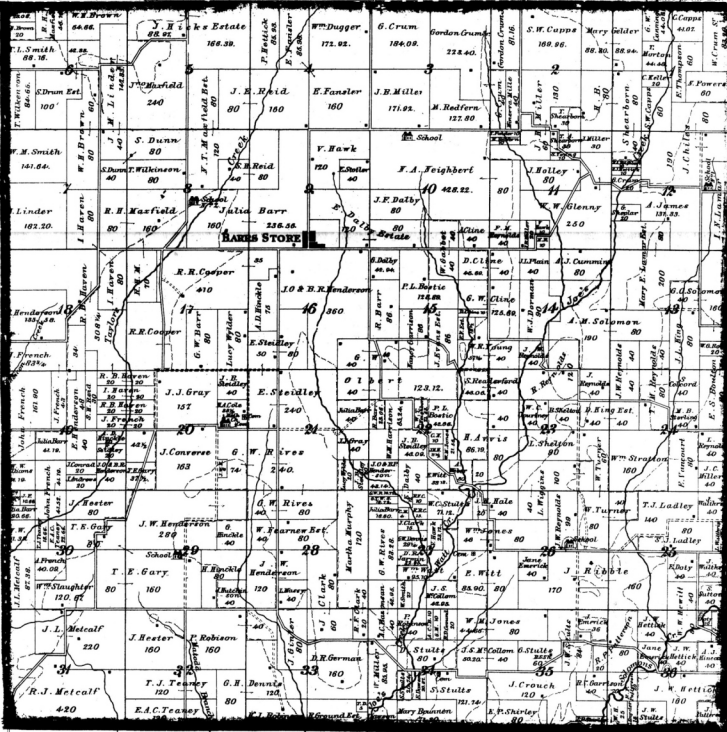
SCOTTVILLE REFERENCES.

- J. B. ANELLO,** Stone Mason, Plasterer and Bricklayer.
- G. HOSKINS,** Hotel Proprietor and Farmer.
- L. A. GRAY,** Blacksmith, Wagon Maker, Sapping, Shoeing, etc.
- T. C. LOBB, M.D.,** Physician. Graduate of Louisville University, Mo.
- C. ABBRENS,** Tailor.
- GEO. EBELAY,** Harness Maker, Saddler and Carriage Trimmer.
- B. F. BOOKER,** Restauranter, Dealer in Notions and Confectionery.
- CLARK & SON,** Dealers in Furniture and Caskets of all kinds, Manufacturers of Wagons, Carriages and Buggies.

BARR

T.1.N.R.9.W. of 31st P.M.

Scale 3 inches to the Mile



BARR'S STORE	
1	2
3	4
5	6
7	8
9	10
11	12
13	14
15	16
17	18
19	20

BARR'S STORE.
 JOHN MASON, Physician and Surgeon.

- BARR TP. REFERENCES.**
- EDWIN HENDERSON, Ex-Superior, Trustee of M. E. Church, Farmer and Stock Raiser.
 - J. O. HENDERSON, Farmer, Stock Raiser and Trader, Highway Commissioner. Section 16.
 - J. W. DALEY, Teacher and Farmer. Section 10.
 - J. F. GARY, Teacher. Section 36.

PATRONS' DIRECTORY FOR MACOUPIN COUNTY--CONTINUED.

GILLESPIE TOWNSHIP.

NAME	POST-OFFICE	BUSINESS	NATIVITY	RESIDENCE
P. H. Pender	Gillespie	Farmer	Ill.	1840
A. McDonald	"	Town Clerk	Ill.	1841
T. Warren Floyd	"	Physician and Surgeon	Ill.	1842
H. M. H. Fisher	"	Blacksmith	Ill.	1843
Henry H. Behrens	"	Hood	Ill.	1844
Abraham Fretz	"	Wagon Maker	Ill.	1845
Peter J. Behrens	"	Farmer	Ill.	1846
Mrs. J. L. Miller	"	Miller	Ill.	1847
S. H. Burrows	"	Farmer	Ill.	1848
Dicks Bros.	"	Farmer	Ill.	1849
Robert Brown	"	Farmer	Ill.	1850
Charles Lister	"	Justice of the Peace & Tailor	Ill.	1851
Manner J. Smith	"	Hotel	Ill.	1852
Thomas Rose	"	Wagon Maker	Ill.	1853
John Foster	"	Engineer of City Mill	Ill.	1854
M. C. Parsons	"	Wagon Maker	Ill.	1855
Clas Pettigill	"	Farmer	Ill.	1856
Myron Bartlett	"	Farmer	Ill.	1857
E. Crutenden	"	Farmer	Ill.	1858
Lake Dillard	"	Farmer	Ill.	1859
John Peno	"	Farmer	Ill.	1860
G. W. Schmidt	"	Farmer	Ill.	1861
Joseph Peno	"	Farmer	Ill.	1862
W. T. Kent	"	Farmer	Ill.	1863
L. A. Gwin	"	Farmer	Ill.	1864
F. McDaniel	"	Farmer	Ill.	1865
Mary A. Porter	"	Farmer	Ill.	1866
Waye Smith	"	Farmer	Ill.	1867
Chas. Francis	"	Farmer	Ill.	1868
Tamm Sawyer	"	Farmer	Ill.	1869
W. J. Zeeb	"	Farmer	Ill.	1870
John Francis	"	Farmer	Ill.	1871
John J. Clark	"	Farmer	Ill.	1872
B. F. Sheppard	"	Farmer	Ill.	1873
Basald Clark	"	Farmer	Ill.	1874
Henry Meenan	"	Farmer	Ill.	1875
T. J. DeLann	"	Farmer	Ill.	1876
B. H. Dorsey	"	Farmer	Ill.	1877
Weyne Harms	"	Farmer	Ill.	1878
W. H. Whiffled	"	Farmer	Ill.	1879
D. Gibbs	"	Farmer	Ill.	1880
R. O. O'Quigley	"	Farmer	Ill.	1881
Francis M. Adams	"	Farmer	Ill.	1882
J. D. Wagner	"	Farmer	Ill.	1883
Geo. Dawkins	"	Farmer	Ill.	1884
Wm. W. Atkinson	"	Farmer	Ill.	1885
Roma J. Huddleston	"	Farmer	Ill.	1886
H. Mesenke	"	Farmer	Ill.	1887
Thos. O. Ballew	"	Farmer	Ill.	1888
Fritz Niemier	"	Farmer	Ill.	1889
John Fogarty	"	Farmer	Ill.	1890
Tom J. Young	"	Farmer	Ill.	1891
Anthony W. Crowder	"	Farmer	Ill.	1892

BIRD TOWNSHIP.

NAME	POST-OFFICE	BUSINESS	NATIVITY	RESIDENCE
J. J. Culp	Carlsville	Township Supervisor	Ill.	1840
E. J. Barrett	"	Farmer and Stock Raiser	Ill.	1841
Robert Whitley	"	Farmer and Stock Dealer	Ill.	1842
W. M. Childs	"	Farmer	Ill.	1843
B. W. Haley	"	Professor of Schools	Ill.	1844
James J. Lehman	Chambersfield	Farmer	Ill.	1845
J. S. Sibley	Carlsville	Farmer	Ill.	1846
John Cragg	"	Farmer	Ill.	1847
Samuel Comer	"	Farmer	Ill.	1848
A. D. Comer	"	Town Assessor	Ill.	1849
John M. Mear	"	Town Collector	Ill.	1850
Thomas Leach	Chambersfield	Farmer	Ill.	1851
C. B. Baker	Carlsville	Farmer and Teacher	Ill.	1852
John White	"	Farmer	Ill.	1853
H. Brown	"	Farmer	Ill.	1854
Henry Craig	"	Farmer	Ill.	1855
Chas. Towse	"	Farmer	Ill.	1856

BRIGHTON TOWNSHIP.

NAME	POST-OFFICE	BUSINESS	NATIVITY	RESIDENCE
Asa Potter	Brighton	Attorney at Law	N. York	1831
Edwin Amoss	"	Banker	N. York	1832
F. J. Stratton	"	Editor and Publisher	N. York	1833
A. C. Maclean	"	Editor and Publisher	N. York	1834
J. A. Igrer	"	Editor and Publisher	N. York	1835
M. H. H. Fisher	"	Editor and Publisher	N. York	1836
Daniel Hodget	"	Printer	N. York	1837
Samuel D. Edgington	Miles Station	Farmer and Stock Raiser	Ill.	1838
J. K. Miles	"	Farmer and Stock Raiser	Ill.	1839
Robert Ketchy	"	Farmer and Stock Raiser	Ill.	1840
William Jones	Brighton	Farmer and Stock Raiser	Ill.	1841
James Jones	"	Farmer and Stock Raiser	Ill.	1842
Samuel Varham	"	Farmer and Stock Raiser	Ill.	1843
Nicholas Brown	"	Farmer and Stock Raiser	Ill.	1844
Richard Brown	"	Farmer and Stock Raiser	Ill.	1845
W. W. Heidemann	"	Farmer and Stock Raiser	Ill.	1846
John Bennett	"	Farmer and Stock Raiser	Ill.	1847

GERARD TOWNSHIP.

NAME	POST-OFFICE	BUSINESS	NATIVITY	RESIDENCE
William Lancaster	Gerard	Miller	England	1843
Isaac Heaton	"	Miller and Township Assessor	Pennsylvania	1844
James Fisher	"	Physician	Ohio	1845
Dan S. Mackner	"	Lumber Dealer	Ohio	1846
W. M. Mitchell	"	Physician	Ill.	1847
C. A. Armstrong	"	Physician	Ill.	1848
W. E. Milton	"	Editor	Ill.	1849
Wm. Thompson	"	Manufacturer	Ill.	1850
T. F. Burnett	"	Manufacturer	N. Jersey	1851
Wm. M. Duncan	"	Attorney at Law	Germany	1852
W. W. Gobler	"	Merchant	Ill.	1853
H. Carr	"	Merchant	Ill.	1854
W. A. Kistler	"	Merchant	Ill.	1855
W. E. Lowe	"	Merchant	Ill.	1856
G. E. Dobson	"	Merchant	Ill.	1857
D. Metcalf	"	President Bank	Ill.	1858
Wm. C. Thompson	"	Merchant	Ill.	1859
J. J. Cottingham	"	Merchant	Ill.	1860
D. B. Smalley	"	Merchant	Ill.	1861
W. Edwards	"	Merchant	Ill.	1862
F. Knoch	"	Merchant	Ill.	1863
Jacob T. Crisp	"	Farmer and Stock Dealer	Tennessee	1864
Henry E. White	Virden	Farmer	Ill.	1865
Samuel England	Gerard	Farmer	Ill.	1866
Jen. J. Brubaker	"	Farmer	Ill.	1867
Thomas Brubaker	"	Farmer	Ill.	1868
Anthony Roberts	Virden	Farmer	Ill.	1869
H. B. Wiley	"	Farmer	Ill.	1870
John Ball	"	Farmer and Stock Raiser	Ill.	1871
George Ball	"	Farmer and Stock Raiser	Ill.	1872

NORTH PALMYRA TOWNSHIP.

NAME	POST-OFFICE	BUSINESS	NATIVITY	RESIDENCE
C. W. Waters	Waverly	Farmer and Stock Dealer	Ky.	1847
B. B. Vencil	"	Farmer and Stock Dealer	Ill.	1848
F. Nifong	"	Farmer and Stock Dealer	Ill.	1849
Henry Davidson	"	Farmer and Stock Dealer	Ill.	1850
Spencer Maxwell	Palmyra	Farmer and Stock Raiser	Tennessee	1851
S. S. Newlin	"	Farmer and Stock Dealer	Tennessee	1852
H. M. Shumway	Palmyra	Farmer and Stock Dealer	N. Y.	1853
E. K. McFer	"	Farmer and Stock Dealer	Ill.	1854
Henry Hart	"	Farmer and Stock Raiser	Ill.	1855
H. S. Powell	"	Farmer and Stock Raiser	Ill.	1856
Isaac Naylor	Palmyra	Farmer and Stock Raiser	Ill.	1857
W. B. Naylor	"	Farmer and Stock Raiser	Ill.	1858
J. Cron	"	Farmer and Stock Raiser	Ill.	1859
Joseph Liston	"	Farmer and Stock Raiser	Ill.	1860
J. Snoddy	"	Farmer and Stock Raiser	Ill.	1861
L. H. Hodges	Palmyra	Farmer and Stock Raiser	Ill.	1862
R. Tucker	"	Farmer and Stock Raiser	Ill.	1863
T. W. Williams	"	Farmer and Stock Raiser	Ill.	1864
Samuel Pender	"	Farmer and Stock Raiser	Ill.	1865
C. J. Martin	"	Farmer and Stock Raiser	Ill.	1866
Robert Standley	"	Farmer and Stock Raiser	Ill.	1867
H. Day M.D.	"	Physician	Ill.	1868
Henry Hecker	"	Farmer and Stock Raiser	Ill.	1869
Lez. Handman	"	Farmer and Stock Raiser	Ill.	1870
James Fath	"	Physician	Ill.	1871
Wm. Todd	"	Farmer and Stock Raiser	Ill.	1872
John Young	"	Farmer and Stock Raiser	Ill.	1873
Henry H. Young	"	Farmer and Stock Raiser	Ill.	1874
Henry Hecker	"	Farmer and Stock Raiser	Ill.	1875
Henry H. Folts	"	Farmer and Stock Raiser	Ill.	1876
Henry Whiting	"	Farmer and Stock Raiser	Ill.	1877
John G. Grimmett	"	Farmer and Stock Raiser	Ill.	1878

HONEY POINT TOWNSHIP.

NAME	POST-OFFICE	BUSINESS	NATIVITY	RESIDENCE
John R. Masters	Canfield	Farmer and Supervisor	Illinois	1840
F. J. Sunderland	"	Farmer and Town Clerk	Ill.	1841
W. M. Wilson	"	Farmer and Supervisor	Ill.	1842
Robert F. York	Honorsy	Farmer and Collector	Ill.	1843
Samuel Foster	"	Farmer and Stock Raiser	Tennessee	1844
F. J. Williams	"	Farmer and Stock Raiser	Tennessee	1845
Wm. J. Hart	"	Farmer and Stock Raiser	Ill.	1846
Wm. Jackson	Gilgiewe	Farmer and Stock Raiser	Ill.	1847
John McKeay	"	Farmer and Stock Raiser	Ill.	1848
Marion Berry	Honorsy	Farmer and Stock Raiser	Ill.	1849
James Mack	"	Farmer and Stock Raiser	Ill.	1850
George Walton	Canfield	Farmer and Stock Raiser	Ill.	1851
John H. Shearer	"	Farmer and Stock Raiser	Ill.	1852

PATRONS' DIRECTORY FOR MACAPUQUIN COUNTY--CONTINUED.

CHESTERFIELD TOWNSHIP.

WESTERN MOUND TOWNSHIP.

NAME.	POST-OFFICE.	BUSINESS.	NATIVITY.	Set- tle in Co.
Benjamin Rogers	Chesterfield	Farmer	Madison Co., Ky.	1871
James Birrell, Jr.		1 Merchant	Brown Co., Ill.	1871
Clas J. Bradley		2 Druggist	Greene Co., Ill.	1871
Edson C. Hall		1 Merchant	Greene Co., Ill.	1871
Samuel Lee		1 Merchant	England	1871
George J. Logan		1 Merchant	Merioneth Co., N. Y.	1871
William Towse		1 Wagon Maker	England	1871
Hammond Stamm		1 Dealer in Horses	England	1871
John Allen		1 Resident	England	1871
Robert Oliver		1 Carriage Builder	Kentucky	1871
J. E. Purlson		1 Farmer and Stock Raiser	New York	1871
David T. Hall		1 Farmer and Notary Public	England	1871
Z. B. Lawson		1 Farmer and Stock Dealer	England	1871
John Richardson		1 Farmer and Stock Dealer	England	1871
Thomas S. Gelder		1 Farmer, Stock Dealer & Wagon Maker	Ohio	1871
Robert Carter		1 Farmer and Stock Raiser	Kentucky	1871
J. C. Harlan		1 Farmer and Stock Raiser	New York	1871
M. W. Peltum		1 Farmer	Macapucin Co., Ill.	1871
E. Kelly		1 Resident	Indiana	1871
Mary Ann Candall		1 Farmer	England	1871
Ralph Smith		1 Farmer	England	1871
Wm. H. Holmes		1 Farmer and Minister	England	1871
T. E. Martin		1 Farmer, Stock Dealer & Traveler	Kentucky	1871
Richard Dinkels		1 Attorney at Law	Kentucky	1871
R. Metcalfe	Chesterfield	1 Farmer and Stock Raiser	England	1871
William Shires, Jr.		1 Farmer and Stock Raiser	England	1871
Thomas Swavel		1 Farmer and Stock Raiser	England	1871
Mary D. Carter		1 Farmer and Stock Dealer	Illinois	1871
H. B. Warner	Madison	1 Farmer and Stock Raiser	England	1871
W. T. Overland		1 Farmer, Stock Dealer & Shipper	England	1871
D. Chalkcombe		1 Farmer and Stock Raiser	Vermont	1871
C. C. Percival	Greene, Jersey	1 Justice of the Peace	Mississippi	1871
Thomas B. Rice		1 Grocer	Virginia	1871
James W. Rice		1 Miller	Virginia	1871
S. F. Rice		1 Merchant	Virginia	1871
John W. Rice		1 Butcher and Trader	Kentucky	1871
George Garratt		1 Farmer and Stock Raiser	Virginia	1871
M. L. Stumpff		1 Farmer and Builder	Virginia	1871
F. B. Simpson		1 Hotel	Virginia	1871
Edw. F. Curry				
Wm. M. Simpson				

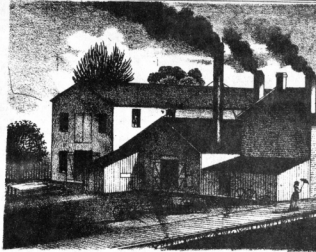
NAME.	POST-OFFICE.	BUSINESS.	NATIVITY.	Set- tle in Co.
John Hagaman	Chesterfield	1 Farmer, Stock Raiser & Trader	Kentucky	1869
D. B. Reader		1 Farmer and Stock Raiser	Illinois	1848
W. H. Hargan		1 Farmer and Stock Raiser	Illinois	1848
W. W. Cook		1 Farmer and Stock Raiser	South Carolina	1841
Philp R. Lee		1 Farmer and Stock Raiser	North Carolina	1865
James C. Moore		1 Farmer and Stock Raiser	England	1866
John W. Rookley		1 Farmer	England	1869
Ralph Woot		1 Farmer and Stock Raiser	Macapucin Co., Ill.	1849
M. H. Wilson		1 Town Collector	Ireland	1865
Eliza Crocker		1 Farmer and Stock Raiser	Ireland	1851
James H. Gray	Payne, Greene Co.	1 Farmer, Stock Raiser & Dealer	Illinois	1851
David Hines		1 Farmer and Stock Raiser	Tennessee	1831
Louisa A. Holmes		1 Teacher and Scholar	Macapucin Co., Ill.	1865
John Hand		1 Farmer and Stock Raiser	Macapucin Co., Ill.	1865
R. C. Car		1 Farmer and Stock Raiser	Tennessee	1831
R. Wootley	Greenfield, Tenn.	1 Farmer, Stock Raiser & Trader	New York	1865
W. Earnest		1 Farmer and Stock Raiser	Langdon Co., Ill.	1864
Lucy R. Thompson		1 Farmer and Stock Raiser	Livermore	1865
F. A. C. Tenney		1 Farmer and Stock Raiser	Virginia	1865
William K. Davis	Payne, Greene Co.	1 Farmer and Stock Raiser	Kentucky	1860
James Hall		1 Farmer	Tennessee	1874
Thomas B. Carr	Greenfield, Tenn.	1 Farmer and Miner	England	1864
Wm. H. H. Bickham	Chesterfield	1 Farmer, Stock Raiser & Trader	New York	1865
Thomas Bell		1 Farmer and Stock Raiser	England	1851
Chas. Hally		1 Farmer and Stock Raiser	England	1851
Nancy Jane Lanter		1 Farmer and Stock Raiser	Macapucin Co., Ill.	1847
John P. Pittman	Greenfield, Tenn.	1 Farmer and Stock Raiser	Macapucin Co., Ill.	1861
W. Keisinger	Chesterfield, Tenn.	1 Farmer, Stock Raiser & Trader	Kentucky	1860
E. B. Maxwell		1 Resident	Jackson Co., Tenn.	1860
Henry S. Cline		1 Farmer	East Tennessee	1861
Wm. McCooly	Chesterfield	1 Farmer and School Director	Kentucky	1851
Wm. V. Vandy	Payne, Greene Co.	1 Farmer and Stock Raiser	Kentucky	1860

STAUNTON TOWNSHIP.

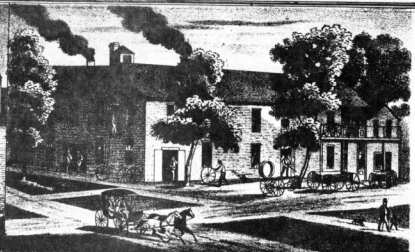
VRIDEN TOWNSHIP.

NAME.	POST-OFFICE.	BUSINESS.	NATIVITY.	Set- tle in Co.
Frank Godfrey	Staunton	1 Hotel	North Carolina	1842
Hines Small		1 Merchant	North Carolina	1842
James Taylor		2 Banker	Virginia	1849
John Linger		1 Salmon and Ice Dealer	Germany	1851
William Fathall		1 Proprietor Coal Mine	Germany	1851
John H. Abrams		1 Lumber Dealer	Germany	1855
John C. Lantin		1 Cooper	Ireland	1868
John Dwyer		1 Merchant and Hotel	England	1868
John C. Overton, Sr.		1 Private Boarding	Germany	1869
Wm. Abright		1 Retail Store Dealer	North Carolina	1831
W. L. Shirley		1 Farmer	Tennessee	1841
S. S. Sawyer		1 Farmer	Tennessee	1841
R. B. Shirley		1 Farmer	Monroe Co., Ill.	1865
Miss Olive		1 Merchant and Stock Raiser	Marion Co., Tenn.	1872
Nancy Jane Small		1 Resident	Madison Co., Ill.	1861
Isert C. Small		1 Painter	Ireland	1861
Hammond Dixon		1 Farmer and Stock Raiser	Ireland	1861
Isse Olive		1 Farmer and Stock Raiser	Ireland	1861
R. T. DeWolf		1 Farmer and Stock Raiser	Ireland	1861
Isabel Williamson		1 Farmer and Stock Raiser	Ireland	1861
Samuel Clark		1 Farmer and Stock Raiser	Ireland	1861
Chauncy Coulson		1 Farmer and Stock Raiser	Ireland	1861
Wm. Clark, Jr.		1 Farmer and Stock Raiser	Ireland	1861
Wm. Clark, Sr.		1 Retired Farmer	Ireland	1861
Wm. William C. Clark		1 Retired Farmer	Ireland	1861
Arthur Little	St. Olive	1 Resident	Illinois	1850
Mrs. Arthur Little		1 Teacher	Illinois	1869
F. M. Henderson		1 Farmer and Stock Raiser	Ireland	1844
Thomas Dripps	Staunton	1 Merchant	Germany	1855
Mrs. Thos. Dripps		1 Merchant	Germany	1855
C. J. Kerner	St. Olive	1 Merchant	Germany	1855
Wm. Neumeyer		1 Merchant	Germany	1855
Henry Albert		1 Merchant	Germany	1855
Henrich Pflanz		1 Merchant	Germany	1855
Meint Arkelauer		1 Merchant	Germany	1855
Christi Krieger		1 Merchant	Germany	1855
Wilhelmina Krieger		1 Merchant	Germany	1855
Herbert Niedermier		1 Merchant	Germany	1855
H. P. Dingsinger		1 Merchant	Germany	1855
W. M. Stevens	Staunton	1 Farmer and Stock Raiser	Missouri	1844
Edw. Meckle		1 Farmer and Stock Raiser	Illinois	1844
Jacob Buhl		1 Merchant	Germany	1846
Henry Voge		1 Coal Dealer	Germany	1846

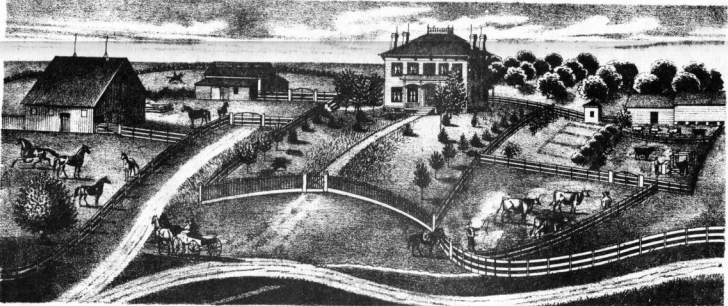
NAME.	POST-OFFICE.	BUSINESS.	NATIVITY.	Set- tle in Co.
S. B. Vidson	Vriden	1 Merchant	Illinois	1842
M. L. Vidson		1 Merchant	Illinois	1842
W. F. Thompson		1 Editor	New Hampshire	1868
Wm. C. Cunn		1 Merchant	Illinois	1868
Balfour Cowen		1 Attorney at Law	Indiana	1864
J. H. Higginson		1 Wagon Maker	New Jersey	1854
C. A. Hutchinson		1 Wagon Maker	Illinois	1854
Richard Ball		1 Wagon Maker	Ohio	1854
Henry Crawford		1 Planing Mill	South Wales	1865
Chas. Humphreys		1 Merchant	Fayette Co., Penn.	1861
Chas. F. Drinnam		1 Merchant	Kentucky	1872
W. W. Post		1 Merchant	Germany	1869
Isos W. Simon		1 Miller	England	1869
H. H. Jones		1 Merchant	Ohio	1864
R. W. Wigginton		1 Merchant	Scott Co., Ky.	1862
Henry B. Hill, Jr.		1 Wagon Maker	Ohio	1872
Henry Hill, Sr.		1 Merchant	Ohio	1869
W. H. Krown		1 Merchant	Madison Co., Ill.	1871
M. J. Henderson		1 Farmer and Stock Raiser	Kentucky	1851
Levi M. Hendon		1 Farmer	Kentucky	1851
John S. Whittier		1 Farmer and Stock Raiser	Illinois	1851
John S. Crocker		1 Farmer and Stock Raiser	Ohio	1871
Thos. C. Chase		1 Farmer and Stock Raiser	Ohio	1871
Thos. G. Inckles		1 Farmer and Stock Raiser	Ohio	1871
Valton Ross		1 Attorney at Law	Illinois	1854
Patrick Sillway		1 Private Boarding	New Hampshire	1856
John S. Howell		1 Private Boarding	Illinois	1856
William Emerson		1 Farmer and Stock Raiser	England	1857
J. S. Keay		1 Farmer and Stock Raiser	Ohio	1857
J. N. Keay		1 Superintendent of Schools	Madison Co., N. Y.	1864



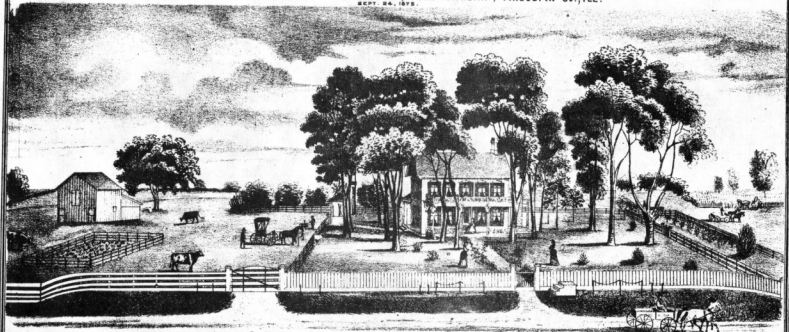
REAR VIEW OF DAVID MORRIS' SHOPS.



WAGON & MACHINE SHOPS OF DAVID MORRIS, BUNKER HILL, ILL.



FARM RESIDENCE OF JOHN HOUNSLEY, POLK TOWNSHIP, MACOUPIN CO., ILL.

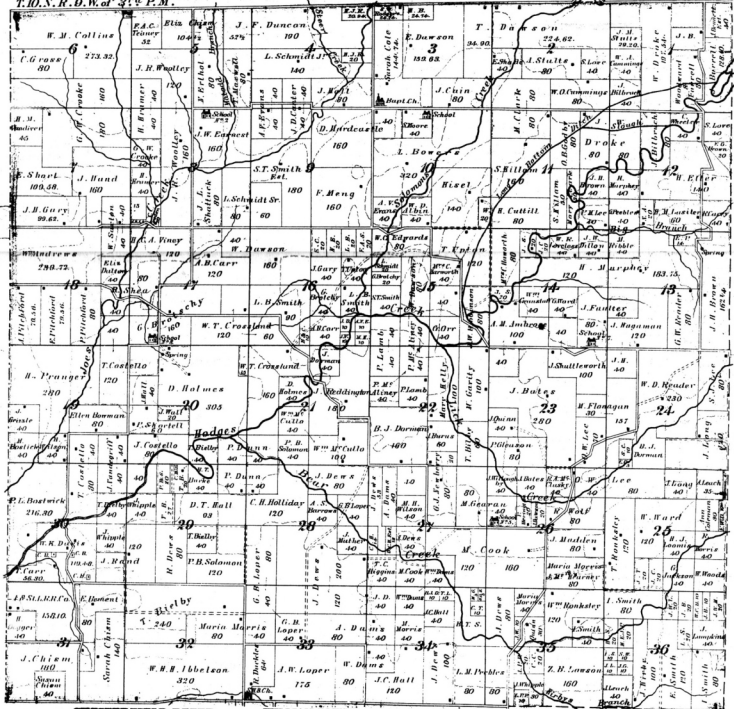


FARM RESIDENCE OF A. W. LOPER ESQ., WESTERN MOUND TWP., MACOUPIN CO., ILL.

WESTERN MOUND

T.O.N.R.O.W. of 3rd P.M.

Scale 2 inches to the Mile



CHESTERFIELD REFERENCER

JAMES BRIDGALL, JR., Dealer in Dry Goods, Clothing, Boots, Hats, Caps, Groceries, General Merchandise, etc.

HALL & LERER, Dealers in Dry Goods, Clothing, Groceries, Hats, Caps, Boots, Shoes, Queensware, Hardware and General Merchandise. Our stock is always kept complete in all lines, by frequent arrivals of new goods. Lowest legitimate prices guaranteed to all.

EDSON C. HALL, J. LERER

CHAR. BRAMLEY, Dealer in Drugs, Medicines, Paints, Tapers and Toilet Articles, Perfumery, etc. Choice Family Groceries, Fine Wines and Liquors for medicinal use, Packet Cutlery, Stationery, Coal Oil, Lamps, Field and Garden Seeds. Medicines warranted of the best quality.

WILLIAM TOWNE, Manufacturer of Wagons, Carriages, Buggies, etc. Repairing done in all its branches. Blacksmithing and Horse Shoeing. Best job and custom work. Terms cash. Dealer in Agricultural Implements.

HENRY FLAME, Manufacturer of Boots and Shoes. Specially made of cobbling.

JOHN ALLEN, Dealer in Fine Stock. Norman Horses. Stock Trader.

ROBERT OLIVER, Furniture Dealer and Undertaker.

J. C. PEEBLES, Carriage Builder & Body Maker; also School Director.

Z. B. LAWSON, Notary Public.

M. PAULSEN, Manufacturer of Wagons, Carriages, Buggies and Plovers. Repairing done in all its branches. Also Blacksmithing and Horse Shoeing. Best job and custom work. Terms fair. Dealer in Agricultural Implements.

CHESTERFIELD CORNET BAND,

J. C. Peebles, President,
M. Nix, Secretary,
M. Nix, Treasurer.

J. Birdall, Jr., 1st EA. Wm. Cook, 1st Tenor BA,
John M. Nix, 1st EA. W. T. Staples, Baritone BA,
Thos. Towne, 2d EA. J. C. Peebles, EA Tuba,
Edwin Towne, 1st BA. George Lee, Small Drum,
John Peebles, 2d BA. James Hall, Bass Drum and
E. L. Berryman, 1st EA. Cymbals.

Also:
Band meets semi-weekly—Wednesday and Friday nights.

E. B. HARLAN, Farmer and Minister. Dealer in Dry Goods at Kemper, Jersey County, Ill.

P. B. SOLOMON, Postmaster, Att'y at Law.

PATRONS' DIRECTORY FOR MACOUPIN COUNTY--CONTINUED.

✓ SOUTH OTTER TOWNSHIP.

NAME.	POST-OFFICE.	BUSINESS.	NATIVITY.	Set-tled in Co.
John Stokes	Carlinville	Farmer and Stock Dealer	Ireland	1864
Thomas Bacon	"	Farmer and Town Clerk	England	1827
Mortimer Smith	"	Farmer and Justice of the Peace	England	1827
Woodford Neighbour	Bufiled	Farmer	England	1825
Robt. Bacon	"	Farmer and School Treasurer	Indiana	1855
J. D. Johnson	"	Farmer and School Treasurer	Indiana	1855
R. Z. Johnson	"	Farmer and School Director	Indiana	1856
H. M. Johnson	"	Farmer and Stock Raiser	Indiana	1856
Onon F. Smith	"	Farmer	Illinois	1848
Samuel M. Welton	Carlinville	Farmer and Church Trustee	Illinois	1856
William D. Metcalf	Nilwood	Farmer and Church Trustee	Illinois	1856
Wm. Euter	"	Farmer and Church Trustee	Illinois	1856
Jeff Adams	"	Farmer and Stock Raiser	Kentucky	1854
Stacy	Carlinville	Farmer and Stock Dealer	Tennessee	1857
W. J. Lovless	"	Farmer and Stock Dealer	East Tennessee	1845
J. Brown	Nilwood	Farmer and Stock Dealer	Tennessee	1857
John M. Brown	"	Farmer and Stock Raiser	North Carolina	1855
John M. Snyder	"	Farmer and Stock Raiser	Macoupin Co., Ill.	1839
Eliza Harbison	"	Farmer and Stock Dealer	Illinois	1854
R. Jones	"	Farmer and Stock Dealer	Kentucky	1857
Thomas Morgan	"	Farmer and Stock Dealer	East Tennessee	1853
Geo. D. Crawford	"	Farmer and Stock Raiser	Virginia	1856
M. Whitaker	"	Farmer and Stock Raiser	East Tennessee	1853
A. R. Coevangham	"	Farmer and Stock Raiser	Illinois	1847
P. W. Allen	"	Farmer and Stock Dealer	Illinois	1847
Jackson Hall	"	Farmer and Stock Dealer	Illinois	1856
P. M. Shanz	"	Farmer and Stock Dealer	Virginia	1856
Moses Howell	"	Supervisor and School Trustee	East Tennessee	1856
J. Shoats	Girard	Farmer and Stock Dealer	Tennessee	1856
T. S. Barrow	Nilwood	Farmer and Stock Dealer	Kentucky	1856
Joseph Price	"	Farmer and Stock Dealer	New Jersey	1857
Fernando W. Morse	"	Farmer and Stock Raiser	Massachusetts	1855
Joseph F. Smith	"	Farmer and Stock Raiser	New Jersey	1855
Jonathan J. Nixon	Nilwood	Farmer and Stock Raiser	Ohio	1846
J. W. Braddock	"	Wagon Maker	Iowa	1859
Isaac M. Cherry	"	Farmer and Stock Raiser	Macoupin Co., Ill.	1853
John Jenkins	"	Farmer and Stock Raiser	Kentucky	1855
D. Davidson	"	Farmer and Stock Raiser	Kentucky	1855
Thomas Mahan	Palmyra	Farmer and Stock Dealer	Indiana	1850
Jonathan Crawford	"	Farmer and Stock Dealer	Illinois	1850
John Davidson	Girard	Farmer and Stock Dealer	Illinois	1845
Thomas Morgan	"	Farmer and Stock Dealer	Illinois	1845
John Zambrock	"	Farmer and Stock Dealer	Germany	1857
Francis Keller	"	Farmer and Stock Dealer	Bavaria	1857
F. B. Champney	"	Farmer and Stock Dealer	New Hampshire	1857
Cha. W. Palmer	"	Farmer and Stock Raiser	Macoupin Co., Ill.	1854
D. H. Marbury	Nilwood	Farmer and Stock Raiser	Ohio	1854

✓ DORCHESTER TOWNSHIP.

John R. Sawyer	Dorchester	Farmer and Supervisor	Madison Co., Ill.	1851
C. W. Wayne	"	Farmer	Bourbon Co., Ky.	1844
F. H. Laker	"	Farmer	Junata Co., Pa.	1855
T. J. Laker	"	Farmer	Illinois	1855
Abraham Isaac, Sr.	Dorchester	Farmer and Stock Raiser	Kentucky	1850
Abraham Isaac, Jr.	"	Farmer	Illinois	1855
Elilo Flannery	Stanton	Farmer	Tennessee	1850
E. D. Widler	"	Farmer	Illinois	1851
Jonathan Sawyer	"	Farmer	Macoupin Co., Ill.	1855
Levi Sawyer	"	Farmer	Illinois	1855
D. B. Sawyer	Dorchester	Farmer	North Carolina	1851
Schuyler Iton	"	Farmer	Virginia	1856
E. T. Irish	Banker Hill	Farmer	Illinois	1856
Nelson M. Pope	"	Farmer	Butler Co., Ky.	1847
Samuel E. Palmer	"	Farmer	Germany	1857
William Schreier	"	Farmer	Germany	1857
Charles Kretschmer	"	Farmer	Germany	1857
Henry Durbin	Stanton	Farmer	Germany	1856
Isaac Funderburk	"	Farmer	South Carolina	1856
J. H. Bauer	Banker Hill	Farmer and Stock Raiser	Saxony, Ger.	1848

✓ CAHOKIA TOWNSHIP.

Wm. Lancaster	Horstaly	Farmer	England	1839
Penr B. Kames	"	Farmer	England	1839
A. J. Cook	"	Farmer	Parkr Co., Ind.	1846
E. S. Houns	Gillette	Farmer	England	1850
Hugh Rice	"	Farmer	Ireland	1850
T. F. Schwegge	Mt. Olive	Farmer	Prussia	1856
F. W. Schwegge	"	Farmer	Prussia	1856
Wm. Eckemyer	"	Farmer	Prussia	1857
W. Uichmann	"	Farmer	Prussia	1857
H. Ranshart	"	Farmer	Germany	1857
Henry Meyer	"	Farmer	Germany	1857
H. W. Schwegge	"	Farmer	Prussia	1857
Mary A. Kinder	Lynchfield	Farmer	Indiana	1859
Henry Trench	"	Farmer	Indiana	1859
Alexander Robson	"	Farmer	Nova Scotia	1857
H. B. Hlevins	Horstaly	Farmer	France Co., Ill.	1858
Z. Harris	"	Farmer	Wood Co., Ill.	1859
Frank Holden	"	Miller	Vermont	1854

✓ MILWOOD TOWNSHIP.

NAME.	POST-OFFICE.	BUSINESS.	NATIVITY.	Set-tled in Co.
J. N. McElvain	Nilwood	Farmer and Stock Raiser	Kentucky	1851
John H. Ballinger	"	Farmer & S's Raiser	Kentucky	1856
David C. Ezell	"	Farmer and Stock Dealer	Illinois	1857
Samuel Sead	Girard	Farmer and West Raiser	Yorkshire, England	1845
John W. McRay	Nilwood	Farmer & S's Raiser & Supervisor	Illinois	1855
F. Hamilton	Girard	Farmer and Stock Raiser	Tennessee	1855
L. Buford	"	Farmer and Stock Raiser	Tennessee	1855
Chas. Ed Smith	Nilwood	Farmer	New York	1855
W. J. Dees	"	Druggist	Indiana	1855
J. Norvell	"	Farmer	Macoupin Co., Ill.	1853
E. E. Enter	"	Druggist	Macoupin Co., Ill.	1857
H. Cooper	"	Wagon Maker	Germany	1856
Wm. C. Roach	"	Miller	Tennessee	1856
C. Malone	"	Agricultural Implements	Kentucky	1859
Isaac N. Corrington	"	Farmer and Stock Raiser	Macoupin Co., Ill.	1845
W. Dickerson	Girard	Farmer and Stock Raiser	Kentucky	1855
R. J. Fox	"	Farmer and Stock Raiser	New York	1853
D. Dickerson	"	Farmer and Stock Raiser	Edwards Co., Ill.	1845
W. Thacker	Nilwood	Farmer and Stock Raiser	Macoupin Co., Ill.	1844
W. Stratton	Girard	Farmer and Stock Raiser	Ohio	1859
D. Kelley	Nilwood	Farmer and Stock Raiser	South Carolina	1854
M. Paden	"	Farmer and Stock Raiser	Macoupin Co., Ill.	1854
David Sudd	Girard	Farmer and Stock Raiser	Tennessee	1858
Henry C. Tiller	"	Farmer and Stock Raiser	Macoupin Co., Ill.	1854
Margaret Ann Filler	"	Farmer and Stock Raiser	Tennessee	1858
Louis C. Filler	"	Farmer and Stock Raiser	Virginia	1858
Benjamin Rogers	"	Farmer and Minister	Illinois	1857
H. T. Jones	Nilwood	Physician	Kentucky	1854

✓ SHIPMAN TOWNSHIP.

W. S. Seaman, M.D.	Shipman	Physician	New York	1854
J. B. Andrews	Piasa	Merchant	Illinois	1855
M. Wilson	"	Blacksmith	Germany	1853
A. Goodman	"	Blacksmith	Germany	1853
M. Keel	"	Mechanic	Illinois	1859
T. Daniell	Piasa	Mechanic	Delaware	1859
H. K. Kendall	"	Farmer and Physician	England	1855
J. H. Stratton	"	Farmer	Tennessee	1856
W. S. Gilson	Medora	Farmer	New York	1854
G. W. Gilson	"	Farmer	New York	1854
John D. Wilson	Piasa	Farmer	Illinois	1854
Thomas H. Bowman	Shipman	Farmer	Pennsylvania	1854
E. L. Hupp	"	Farmer	Illinois	1854
J. W. Christopher	"	Farmer	Ohio	1856
C. E. Wilson	Piasa	Farmer	Illinois	1855
K. F. Rambo	"	Farmer & Justice of the Peace	Delaware	1857
George Parker	"	Farmer	Tennessee	1857
Levi Sausan	"	Farmer	Virginia	1856
H. G. Talley	"	Farmer	Illinois	1856
James Morgan	"	Farmer	Delaware	1856
W. W. Reynolds	"	Farmer	Delaware	1856
Edwin Johnson	Shipman	Farmer	New York	1856
Henry Sudd	"	Farmer	New York	1856
Henry Huskinson	"	Farmer	England	1858
Andrew Doherty	"	Farmer	Tennessee	1858
Edw. Wales	Medora	Farmer and Banker	Vermont	1858
James Timmon	"	Farmer	Tennessee	1858
R. Meystard	Shipman	Merchant and Postmaster	England	1856
L. Newcomb	"	Deputy Sheriff	New York	1855

✓ BARR TOWNSHIP.

W. Henderson	Greenfield	Farmer and Tp. Supervisor	Greene Co., Ill.	1833
J. K. Metcalf	"	Farmer and Stock Raiser	Kentucky	1855
Frederick Robson	Barr's Store	Farmer	Macoupin Co., Ill.	1856
Wm. W. Masfield	"	Farmer	Macoupin Co., Ill.	1850
Markus J. Terry	Greenfield	Farmer	Greene Co., Ill.	1859
Sally T. Gray	Barr's Store	Resident	Christian Co., Ky.	1845
Wm. Barr	"	Resident	Macoupin Co., Ill.	1854
Edwin J. Masfield	Greenfield	Resident	Rockingham Co., Va.	1850
Edw. H. R. Coates	"	Farmer	Ohio	1850
Samuel Henderson	"	Farmer and Stock Raiser	Ohio	1850
E. O. Henderson	Barr's Store	Farmer and Stock Raiser	Macoupin Co., Ill.	1858
Edw. Chas. Haas	Greenfield	Resident	Tennessee	1857
J. W. Dalbey	"	Teacher and Farmer	Virginia	1857
J. F. Grier	"	Teacher	Illinois	1857
E. Fambler	Barr's Store	Farmer, S's Raiser & Dealer	Tennessee	1857
W. R. Coates	"	Farmer and Stock Raiser	Illinois	1856
J. P. Williams	Palmyra	Farmer and Stock Raiser	White Co., Tenn.	1856
Jefferson Crouch	"	Farmer and Stock Raiser	East Tennessee	1850

PATRONS' DIRECTORY FOR MACOUPIN COUNTY—CONCLUDED.

BOOTHVILLE TOWNSHIP.

NAME.	POST-OFFICE.	BUSINESS.	NATIVITY.	AGE IN 1870.
J. H. Anglo	Scottville	10 Township Supervisor	Pennsylvania	1851
Z. W. Butler	"	11 Farmer	North Carolina	1844
G. Hoskins	"	11 Farmer	Tennessee	1842
L. A. Gray	"	11 Farmer and Hotel Keeper	Kentucky	1861
T. C. Lobb, M. D.	"	10 Blacksmith	Illinois	1857
Charles Abrams	"	10 Tailor	Kentucky	1874
George Schott	"	10 Harness Maker	Germany	1859
B. B. Booker	"	10 Merchant	Pennsylvania	1859
W. A. Clark	"	10 Farmer and Stock Raiser	Illinois	1868
James Walker	"	11 Farmer and Stock Raiser	Illinois	1856
C. W. Hoover	"	11 Farmer and Stock Shipper	Kentucky	1865
Geo. W. Cunningham	"	11 Farmer, Stock Raiser & Buyer	Macoupin Co., Ill.	1841
Lenard Banning	"	10 Farmer and Stock Raiser	Hillmore, Md.	1856
James W. Eades	"	10 Farmer and Stock Raiser	Cumberland Co., Ky.	1864
Wm. Vanburen	"	10 Farmer and Stock Raiser	Tennessee	1851
A. W. Richmond	"	10 Farmer and Stock Raiser	Marion Co., Ky.	1865
Fontana Land	"	11 Farmer and Stock Raiser	Madison Co., Ky.	1841
A. J. Arnold	"	11 Farmer and Stock Raiser	Macoupin Co., Ill.	1840
Honora Arnold	"	11 Farmer and Stock Raiser	Macoupin Co., Ill.	1841
Antin Royle	"	11 Farmer and Stock Raiser	Sumner Co., Tenn.	1856
B. F. Owens	"	11 Farmer and Stock Raiser	Tennessee	1856
Thos. J. Hart	"	11 Farmer and Coal Miner	Morgan Co., Ill.	1862
Christine Butler	"	11 Farmer	Germany	1857
W. B. Hart	"	11 Farmer and Stock Raiser	Macoupin Co., Ill.	1845
C. M. Butler	"	11 Farmer and Stock Raiser	Marion Co., Ky.	1865
Benjamin Ellis	"	11 Farmer	Macoupin Co., Ill.	1845
Wm. M. Owens	"	11 Farmer and Stock Raiser	Macoupin Co., Ill.	1854
S. A. Buchanan	"	11 Coal Miner	England	1845
J. E. Nevin	"	10 Farmer	Macoupin Co., Ill.	1844
Wm. Corning Sr.	"	10 Farmer	England	1845
John Lynch	"	10 Farmer	Macoupin Co., Ill.	1844

SOUTH PALMYRA TOWNSHIP.

NAME.	POST-OFFICE.	BUSINESS.	NATIVITY.	AGE IN 1870.
A. C. Hale	Palmyra	4 Blacksmith	Tennessee	1853
J. M. King	"	4 Blacksmith	Illinois	1854
John J. Ramsey	"	4 Farmer	Illinois	1857
F. H. Mahon	"	1 Farmer	Kentucky	1851
J. E. Hagan	"	1 Farmer	Illinois	1857
Mary Lane Tunmyre	Beaufort	14 Farmer	East Tennessee	1854
Frank Kabachek	"	14 Farmer	Bohemia	1859
M. M. Copelan	"	14 Farmer	Bohemia	1860
Bart Lutz	"	14 Farmer	Missouri	1868
Mrs. Nansie E. Brady	Palmyra	17 Farmer	White Co., Tenn.	1866
J. F. Williams	"	17 Farmer and Stock Raiser	White Co., Tenn.	1866
Jefferson Couch	"	18 Farmer	East Tennessee	1836

POLK TOWNSHIP.

NAME.	POST-OFFICE.	BUSINESS.	NATIVITY.	AGE IN 1870.
Timothy O'Neil	Plain View	13 Farmer	Ireland	1845
James Kafferty	Chesterfield	6 Farmer	Kentucky	1854
E. O. Durkals	"	4 Farmer and Stock Dealer	Illinois	1844
John Hummety	"	11 Farmer and Stock Dealer	England	1842
Silas W. Sowell	Macopin Sta'n.	10 Farmer and Stock Raiser	Illinois	1840
W. A. Towse	Carlinville	7 Farmer	Macoupin Co., Ill.	1856
Moses S. Eldred	"	9 Farmer	Turketer Co., N. Y.	1857

SHAW'S POINT TOWNSHIP.

NAME.	POST-OFFICE.	BUSINESS.	NATIVITY.	AGE IN 1870.
W. T. Barnett	Carlinville	10 Farmer and Stock Dealer	Illinois	1847
C. T. Richardson	"	10 Farmer and Stock Raiser	Illinois	1840
G. F. Carpenter	Zanesville	10 Mechanic	Illinois	1850
Geo. F. Grotts	"	14 Farmer	South Carolina	1851
David Beck	Carlinville	11 Farmer	Illinois	1868
R. A. Wilson	"	11 Farmer	Illinois	1868
J. C. Rankin	"	11 Farmer	Illinois	1869
John W. Fitcher	"	11 Farmer	Illinois	1869
H. S. Rountree	Lincoln	11 Farmer	Illinois	1869
English	Carlinville	11 Farmer	Illinois	1869
J. F. Follington	"	11 Farmer and Stock Dealer	Kentucky	1863
W. Masters	"	11 Farmer	Illinois	1863
S. M. Hupsheth	"	11 Farmer	Tennessee	1845
John Southam	"	11 Farmer	Indiana	1850
Charley Whison	Girard	14 Farmer	Illinois	1874
Abraham Travis	Carlinville	14 Farmer	England	1867
Peter Kow	"	14 Farmer	England	1867
A. K. Gates	"	14 Farmer	Kentucky	1865
Mrs. E. Wyder	"	14 Farmer	Kentucky	1865
John J. Womack	"	14 Farmer	Kentucky	1853
C. V. Smith	"	14 Farmer	England	1866
C. W. Smith	"	10 Farmer and Stock Dealer	Kentucky	1862
E. D. Trout	Zanesville	10 Farmer	Kentucky	1866
D. Buggdon	Carlinville	11 Physician	Illinois	1850
J. March	Zanesville	11 Teacher	Missouri	1856

HILLYARD TOWNSHIP.

NAME.	POST-OFFICE.	BUSINESS.	NATIVITY.	AGE IN 1870.
Samuel Brown	Plain View	4 Merchant and Postmaster	North Carolina	1841
A. W. Schultz	"	4 Mechanic	New York	1860
Joseph W. Gosler	"	11 Farmer	Illinois	1854
William O. Hayward	"	11 Farmer	Illinois	1854
Wm. M. Coulter	Bunker Hill	11 Farmer	Missouri	1869
John H. West	"	11 Farmer	Illinois	1864
Joseph M. McCurdy	"	16 Farmer	Pennsylvania	1868
R. H. Vandeventer	"	16 Farmer	Jersey	1870
C. E. Nangle	"	16 Farmer	Missouri	1870
C. Owen	Plain View	4 Agent	Illinois	1865
David McCaske	"	12 Farmer	Illinois	1851
Charles Lockyer	Bunker Hill	14 Farmer	England	1868
Thos. Davis	"	14 Farmer	Ohio	1868
Chas. Dexter	"	15 Farmer	Ohio	1868
Charles Shultz	"	15 Farmer	Ohio	1868
C. Brown	Plain View	11 Farmer	Kentucky	1863
F. Carroll	"	11 Farmer	Illinois	1850

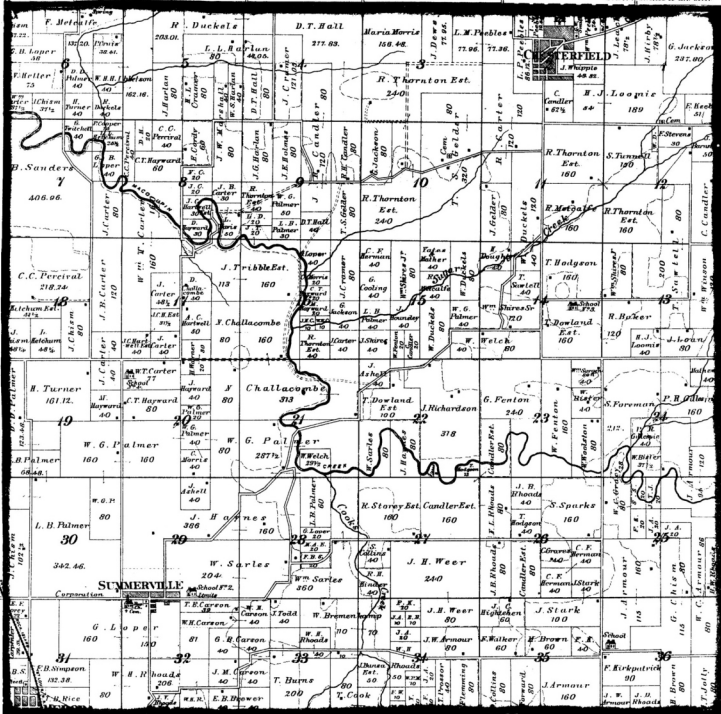
BUSHY MOUND TOWNSHIP.

NAME.	POST-OFFICE.	BUSINESS.	NATIVITY.	AGE IN 1870.
George Cowell, Jr.	Carlinville	14 Farmer and Supervisor	Isla de Man	1865
Levi Mitchell	Gilesville	10 Farmer and Minister	Kentucky	1860
Harmon Miller	Carlinville	11 Farmer	Germany	1860
L. T. Perdue	"	11 Farmer and Justice of Peace	Germany	1859
August Mack	"	10 Farmer	Kentucky	1854
John H. Wilson	"	10 Farmer	Kentucky	1854
Samuel Huddleston	"	14 Farmer	Kentucky	1854
Eliza Poole	Carlinville	4 Farmer	England	1861
Wm. Mitchell	Gilesville	14 Farmer	Illinois	1851
Fenelon Tralbe	Carlinville	10 Farmer	Kentucky	1851
Wm. White	"	11 Farmer	Kentucky	1851
J. F. Clark	Gilesville	10 Farmer	Kentucky	1851

CHESTERFIELD

T.O.N. R.O.W. of 3rd P.V.

Scale 2 1/2 inches to the Mile



MEDORA REFERENCES.

J. H. WILLIAMS, Justice of the Peace, School Teacher.

THOS. B. RICE & SON, Proprietors of the Medora Mills. Highest market price paid for grain. Flour exchanged for wheat, and satisfaction guaranteed. Terms cash.

GEO. GARRATT, Dealer in Lumber, Shingles, Lath, Sash, Doors, Blinds, Lime, Hair, etc. Contractor for Dwellings, Barns, etc. An invitation given to all who contemplate building to call and learn terms. Satisfaction guaranteed in every line.

M. L. STUMPF, Farmer and Stock Dealer, Proprietor of first-class Meat Market and General Provision Store, Produce Market. Always open.

F. B. HEPSON, Farmer and Stock Raiser, ex-President of Town Board.

EDWARD F. COREY, Ex-Master of the Summerville Grange, No. 129, President Town Board, and Township Assessor.

WM. H. RHOADS, Farmer, Stock Dealer and Raiser, Treas. Town of Medora, Highway Commissioner, ex-Assessor.

SUMMERVILLE

Map Ch.		MARRIOTT		GARRATT		BARRETT		ADD	
1	2	3	4	5	6	7	8	9	10
11	12	13	14	15	16	17	18	19	20
21	22	23	24	25	26	27	28	29	30
31	32	33	34	35	36	37	38	39	40
41	42	43	44	45	46	47	48	49	50
51	52	53	54	55	56	57	58	59	60
61	62	63	64	65	66	67	68	69	70
71	72	73	74	75	76	77	78	79	80
81	82	83	84	85	86	87	88	89	90
91	92	93	94	95	96	97	98	99	100

G. Loper

180

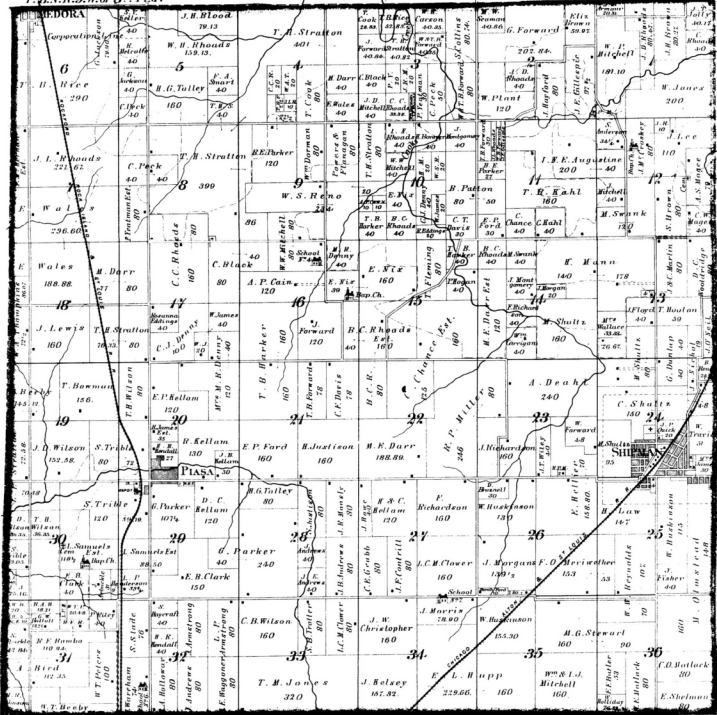
G. Loper

180

SHIPMAN

T. N. N. D. E. of 3rd P. M.

Scale 7 inches to the Mile



PIAZA REFERENCES.

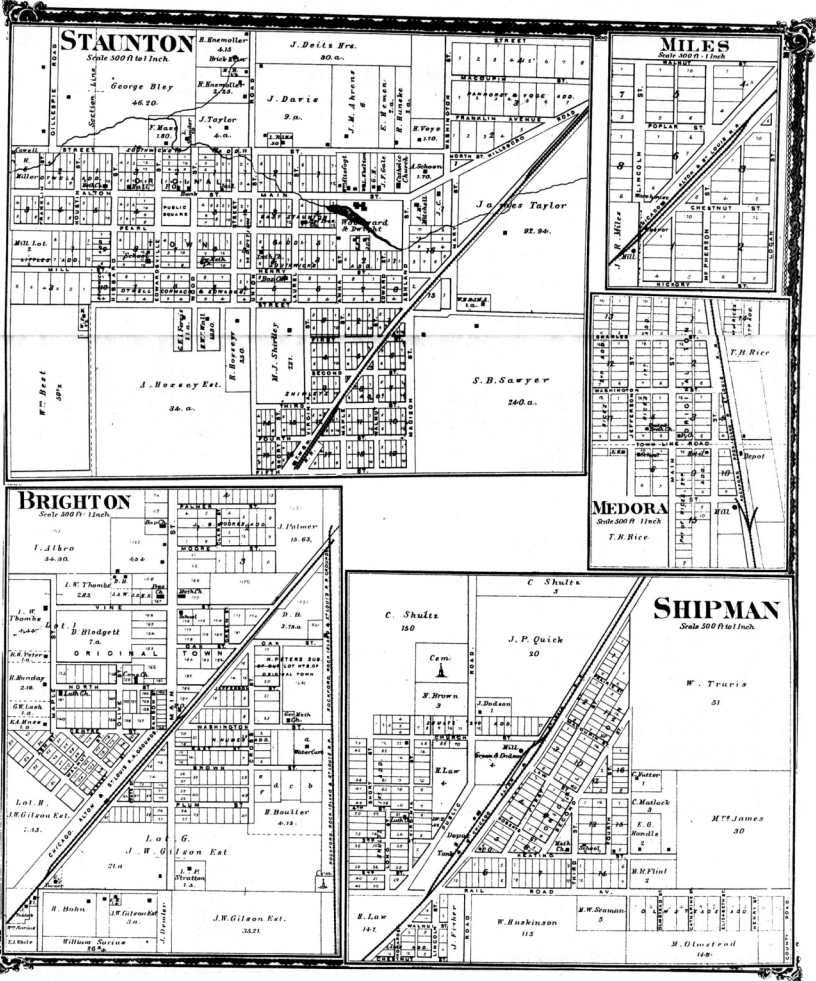
J. T. DARNIELLE, Dealer in Boots, Shoes, Hats, Caps, Groceries, Dry Goods and Ready Made Clothing, Drugs and Chemicals.
H. K. KENDALL, Wagon Maker and Mechanic.
SAMUEL TRIBLE, Farmer and Hydrophobic Physician. Certain cure on no pay.
JOSEPH E. TALLEY, Dealer in Lumber of all kinds. Also Carpenter and Builder.

SHIPMAN TP. REFERENCES.

R. F. RAMBO, Farmer and Justice of the Peace, Section 21.
W. W. REYNOLDS, Breeder of Short Horned Cattle, Berkshire Swine, and General Farmer. Section 15.
EDWIN WALES, Farmer and Banker. Section 7.

SHIPMAN REFERENCES.

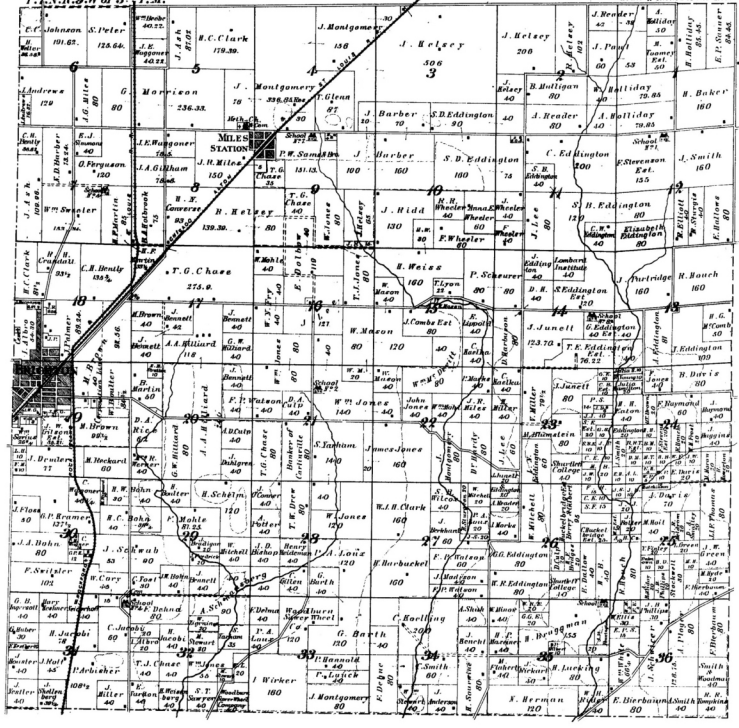
M. W. SEAMAN, M.D., Physician and Surgeon.
J. M. WILCOX, Dealer in Agricultural Implements, Stores and Tinware, Pocket and Table Cutlery.
A. GOODMAN, Horse Shooer and Blacksmithing in general.
F. MARKEL, Blacksmith.
R. MEATYARD, Retail Dealer in General Merchandise, Postmaster, Insurance Agent and Notary Public.
L. NEWCOMB, Deputy Sheriff.



BRIGHTON

T. N. N. D. W. of 3rd P. M.

Scale 2 Inches to the Mile



BRIGHTON REFERENCES.

- ASA POTTER, Attorney at Law.
- STRATTON & AMASS, Bankers.
- A. G. WEACHAM, Editor and Publisher.
- J. A. ILLGER, Editor and Publisher Advance.
- N. HUME, Importer of Percheron Horses.
- DANIEL BLODGETT, Retail Merchant.
- C. W. HEIDEMANN, Dealer in Dry Goods, Clothing, Hats, Caps, Boots, Shoes, Groceries, etc.

Bunker Hill Academy.

OFFICERS.

F. C. HUGHES, President,
H. M. HUTCHINSON, Secretary,
BOSCH TERRY, Treasurer.

TEACHERS.

F. C. HUGHES, R. J. HORNBY, M.D.,
J. A. DELANO, M.D., J. F. CUMMINGS, Mayor,
FERD. BROTHER, M.D., S. A. FLETCHER,
H. M. HUTCHINSON.

Committee of Examination and Supervision.

R. J. HORNBY, M.D., F. BROTHER, M.D.,
J. A. DELANO, M.D.



BUNKER HILL ACADEMY, BUNKER HILL, ILL.

Bunker Hill Academy.

R. H. GORR, A.M., President,
J. G. HOTEL, A.M., Secretary,
J. F. CUMMINGS, Mayor, Treasurer.

Instructors in French, German, and Music.

Composers Teachers will be employed as needed.

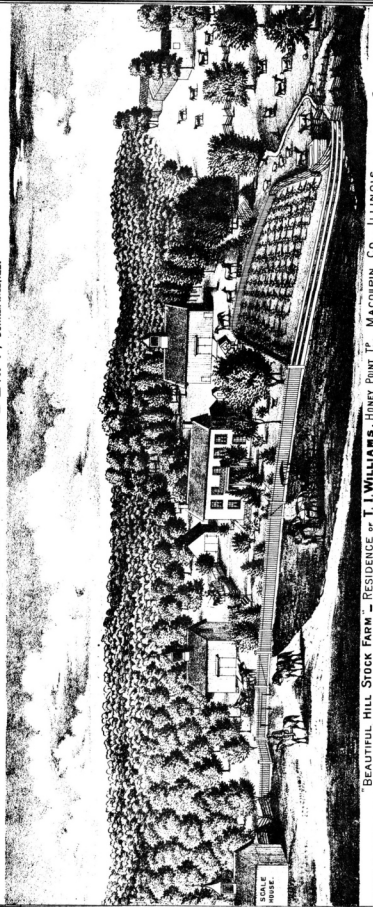
The school year consists of four terms of ten weeks each.

First Term opens Monday, Sept. 15, 1875;
Second Nov. 15, 1875;
Third Jan. 1st, 1876;
Fourth April 1st, 1876.

TUTOR AND INCIDENTALS.

Primary English Branches Per Year
Common English Branches 40
Latin Branches 40
Subsidiary Courses 40
Classical Courses 40
EXTRA. 40
French and German 40

ALL WILLS PAYABLE IN ADVANCE.

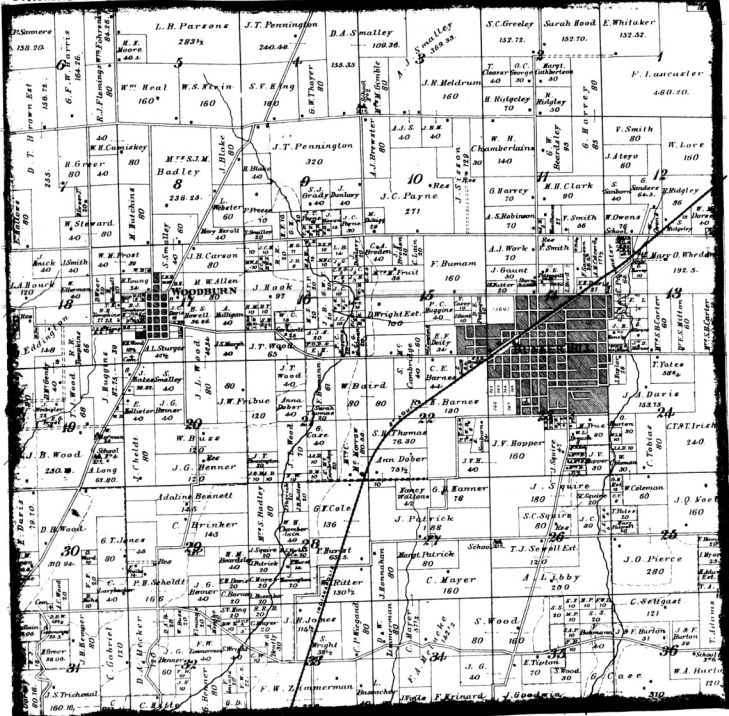


BEAUTIFUL HILL STOCK FARM - RESIDENCE OF T. I. WILLIAMS, HONEY POINT T., MACDOUPIN CO., ILLINOIS.

BUNKER HILL

T. T. N. R. B. Vol. 37. P. M.

Scale 2 Inches to the Mile



BUNKER HILL REFERENCES.

F. W. CROSS, Dealer in Lumber, and Super-visor.
E. W. HAYES, Attorney at Law.
F. G. HEDLEY, Ed. and Pub. "Gazette."
P. C. HUGGINS, Ed.-Judge.
BUNKER HILL BANK, J. Klinefelter, Pres.; J. A. Delano, Vice Pres.; J. A. Beach, Cashier.
DAVID MORRIS, Manufacturer of Agricultural Implements, Buggies, Carriages, Spring and Farm Wagons.
BUDD BROS., the leading Drug House of Bunker Hill. Dealers in Drugs, Stationery, etc.
A. N. YANCEY, Atty and Counselor at Law.
H. M. HUTCHINSON, Representative in Finance for Ins. Co's. Also District Agent for the Mutual Benefit Life Ins. of Newark, N. J.
E. C. WINCHESTER, County Surveyor.
BRODY, J. HORNBET, Physician, Surgeon, and F. ...

GEO. McPHERSON, (Successor to J. V. Hooper), Dealer in all kinds of Hardware, Table and Pocket Cutlery, Agricultural Implements and Pumps.
MRS. M. J. SANKER, Dealer in Millinery, Fancy Goods and Notions.
MAX ILIARDT, Dealer in Hardware and Agricultural Implements.
EDWARD BURTON, Dealer in Dry Goods, Notions, etc.
JAS. T. PENNINGTON, County Sheriff.
FREDERICK BUMANAN, Grain Merchant and Farmer.
W. M. DORSEY, Retired.
TH. L. SPANGENBERG, Dealer in Groceries. Represents first-class Ins. Co's.
MILTON & BARNETT, Physicians.
I. W. CAMP, Practical Watch Maker. Special attention paid to repairing fine watches.
GEO. BRAUN, The leading Barber Shop.

FROELICH & BRO., the leading Bakery. Dealers in Confectionery.
C. E. NORCOTT, Dealer in Hardware.
WM. O. JENCKS, Manufacturer of Carriages, Rockaways, Buggies and Spring Wagons; also Proprietor of Livery.
J. F. CUMMINGS, Dealer in Grain of all kinds.
E. C. ELLET, M.D., Physician.
MORIS TRUB, Retired.
E. SANBORN, Retired.
JOHN A. PITTENGOILL, Cultivator and Dealer in Green House Plants, Roses, Evergreens, Sweet Peas and other Vegetable Plants.
BEN JOHNSON, Proprietor Monument House. The only House in Bunker Hill. Pleasant Summer resort. One hour from St. Louis.
GEO. STEPHENSON, Agent and Operator on the I. and St. L. R.R.
E. H. DAVIS, Deputy Sheriff and Farmer.

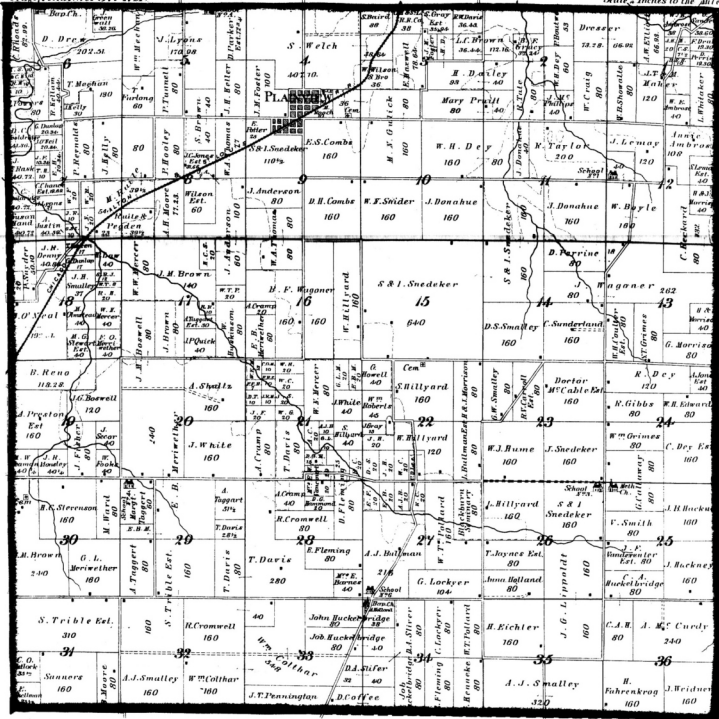
BUNKER HILL TOWNSHIP REFERENCES.

W. H. CHAMBERLAIN, Farmer and Dealer in Milk.
W. R. NIVEN, Farmer and Dealer in Milk.
JONATHAN HUGGINS, Farmer and Fruit Dealer.
E. HOLLISTER, Farmer and City Farmer.
WM. LOVE, Farmer and Dealer in Milk.

HILLYARD

T. & N. R. R. W. of T. R. P. M.

Scale 2 Inches to the Mile



PLAIN VIEW REFER- ENCES.

SAMUEL BROWN, Dealer in Dry Goods, Groceries, Tea, Hardware, Crockery, Hats, Caps, Boots, Shoes, Drugs, Medicines and Oils.

A. W. SCHULTZ, Manufacturer of Wagons, Buggies and Plows. Repairing in all its branches neatly done. Painting in the best style at low rates.

J. C. OWEN, Agent for the Howe Sewing Machine. Needles and attachments for all machines.

HILLYARD TOWNSHIP REFERENCES.

JOSEPH WAGGONER, Farmer and Dealer in Thoroughbred Horses. Owner of *Fab-Dress and Andra's*, well known thoroughbreds, with excellent pedigrees. Section 13.

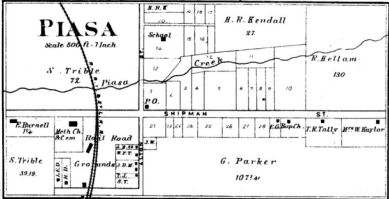
CHAS. LOCKYER, Farmer and Thresher. Section 34.

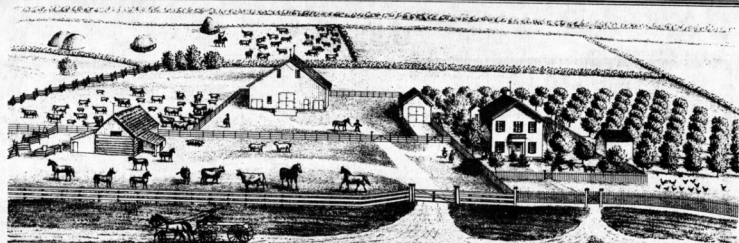
CHAS. DAVIS, Farmer and Dealer in Berkshire Hogs, etc.

POLK

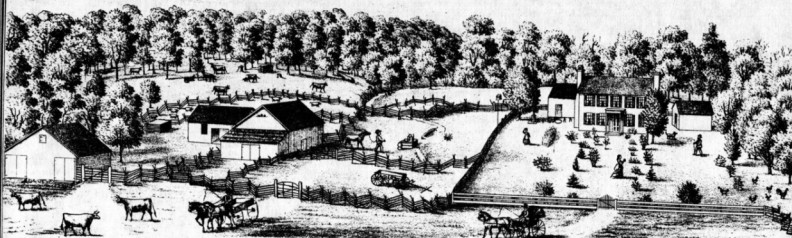
T. O. N. R. S. W. of 3rd P.M.

Scale 2 inches to the Mic





FARM RESIDENCE OF **JOHN McREYNOLDS**, HONEY POINT TP., MACOUPIN CO., ILLS.



FARM RESIDENCE OF **JOHN DEWS**, Esq., WESTERN MOUND TP., MACOUPIN CO., ILL.



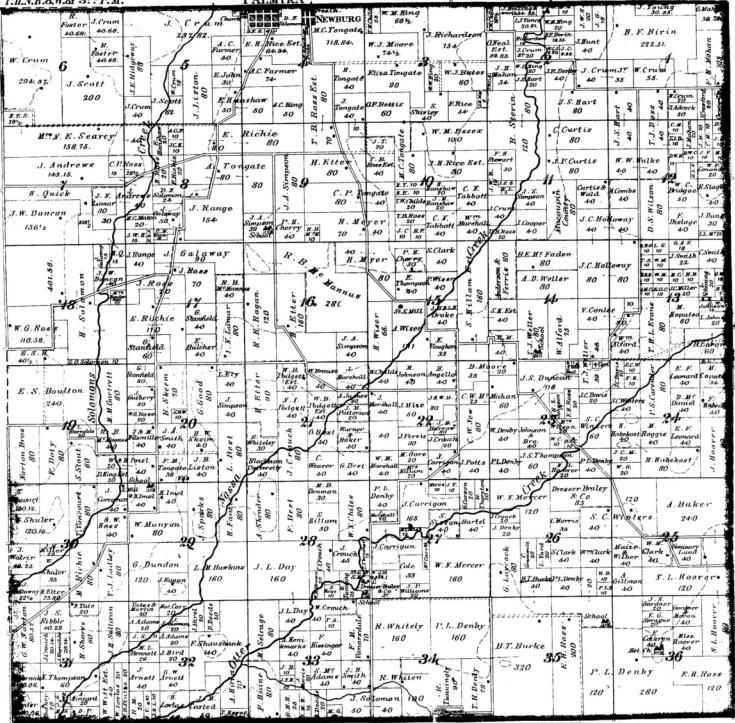
MRS. **JOHN BADLEY**, "WOODBURN GRANGE", MACOUPIN CO., ILLS.

SOUTH PALMYRA

T. & N. R. W. of 3rd P.M.

PALMYRA

Scale 7 Inches to the Mile



PALMYRA REFERENCES.

- B. J. WEDDLEY**, Dealer in Agricultural Implements and Machinery of all kinds. Also Saddlery.
- T. W. CHILES**, Dealer in Dry Goods, Ready Made Clothing, Boots, Shoes, Groceries, Hardware, Notions, Drugs, Patent Medicines, Stationery, etc.
- DEMISEY N. SOLOMON**, Dealer in Dry Goods, Groceries, Hardware, Crockery, Boots, Shoes, Hats, Caps, Ready Made Clothing, Patent Medicines, Harness and Saddlery.
- W. C. MARTIN**, Dealer in Dry Goods, Groceries, Hardware, Crockery, Boots, Shoes, Hats, Caps, Ready Made Clothing, Patent Medicines, Harness and Saddlery.
- ROBERT BRAMLEY**, Dealer in Pure Drugs, Medicines, Family Groceries, Flats, Oils, Colic, Dry Staffs, Perfumery and Hairdress.

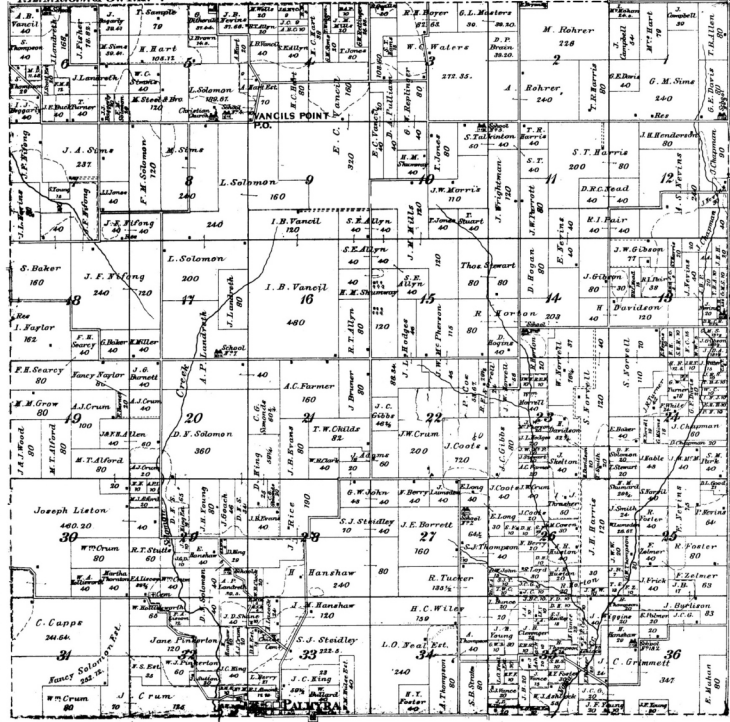
NEWBURG																																																																																																					
<table border="1" style="width: 100%; border-collapse: collapse;"> <tr><td style="width: 50%;">1</td><td style="width: 50%;">2</td></tr> <tr><td>3</td><td>4</td></tr> <tr><td>5</td><td>6</td></tr> <tr><td>7</td><td>8</td></tr> <tr><td>9</td><td>10</td></tr> <tr><td>11</td><td>12</td></tr> <tr><td>13</td><td>14</td></tr> <tr><td>15</td><td>16</td></tr> <tr><td>17</td><td>18</td></tr> <tr><td>19</td><td>20</td></tr> <tr><td>21</td><td>22</td></tr> <tr><td>23</td><td>24</td></tr> <tr><td>25</td><td>26</td></tr> <tr><td>27</td><td>28</td></tr> <tr><td>29</td><td>30</td></tr> <tr><td>31</td><td>32</td></tr> <tr><td>33</td><td>34</td></tr> <tr><td>35</td><td>36</td></tr> <tr><td>37</td><td>38</td></tr> <tr><td>39</td><td>40</td></tr> <tr><td>41</td><td>42</td></tr> <tr><td>43</td><td>44</td></tr> <tr><td>45</td><td>46</td></tr> <tr><td>47</td><td>48</td></tr> <tr><td>49</td><td>50</td></tr> </table>	1	2	3	4	5	6	7	8	9	10	11	12	13	14	15	16	17	18	19	20	21	22	23	24	25	26	27	28	29	30	31	32	33	34	35	36	37	38	39	40	41	42	43	44	45	46	47	48	49	50	<table border="1" style="width: 100%; border-collapse: collapse;"> <tr><td style="width: 50%;">51</td><td style="width: 50%;">52</td></tr> <tr><td>53</td><td>54</td></tr> <tr><td>55</td><td>56</td></tr> <tr><td>57</td><td>58</td></tr> <tr><td>59</td><td>60</td></tr> <tr><td>61</td><td>62</td></tr> <tr><td>63</td><td>64</td></tr> <tr><td>65</td><td>66</td></tr> <tr><td>67</td><td>68</td></tr> <tr><td>69</td><td>70</td></tr> <tr><td>71</td><td>72</td></tr> <tr><td>73</td><td>74</td></tr> <tr><td>75</td><td>76</td></tr> <tr><td>77</td><td>78</td></tr> <tr><td>79</td><td>80</td></tr> <tr><td>81</td><td>82</td></tr> <tr><td>83</td><td>84</td></tr> <tr><td>85</td><td>86</td></tr> <tr><td>87</td><td>88</td></tr> <tr><td>89</td><td>90</td></tr> <tr><td>91</td><td>92</td></tr> <tr><td>93</td><td>94</td></tr> <tr><td>95</td><td>96</td></tr> <tr><td>97</td><td>98</td></tr> <tr><td>99</td><td>100</td></tr> </table>	51	52	53	54	55	56	57	58	59	60	61	62	63	64	65	66	67	68	69	70	71	72	73	74	75	76	77	78	79	80	81	82	83	84	85	86	87	88	89	90	91	92	93	94	95	96	97	98	99	100
1	2																																																																																																				
3	4																																																																																																				
5	6																																																																																																				
7	8																																																																																																				
9	10																																																																																																				
11	12																																																																																																				
13	14																																																																																																				
15	16																																																																																																				
17	18																																																																																																				
19	20																																																																																																				
21	22																																																																																																				
23	24																																																																																																				
25	26																																																																																																				
27	28																																																																																																				
29	30																																																																																																				
31	32																																																																																																				
33	34																																																																																																				
35	36																																																																																																				
37	38																																																																																																				
39	40																																																																																																				
41	42																																																																																																				
43	44																																																																																																				
45	46																																																																																																				
47	48																																																																																																				
49	50																																																																																																				
51	52																																																																																																				
53	54																																																																																																				
55	56																																																																																																				
57	58																																																																																																				
59	60																																																																																																				
61	62																																																																																																				
63	64																																																																																																				
65	66																																																																																																				
67	68																																																																																																				
69	70																																																																																																				
71	72																																																																																																				
73	74																																																																																																				
75	76																																																																																																				
77	78																																																																																																				
79	80																																																																																																				
81	82																																																																																																				
83	84																																																																																																				
85	86																																																																																																				
87	88																																																																																																				
89	90																																																																																																				
91	92																																																																																																				
93	94																																																																																																				
95	96																																																																																																				
97	98																																																																																																				
99	100																																																																																																				

- JAMES L. DAY, M.D.**, Physician, Surgeon and Obstetrician.
- R. M. WILSON**, Physician and Surgeon.
- JAMES FAITH**, Physician and Surgeon.
- R. J. ALLMOND**, Physician, Surgeon and Obstetrician.
- WM. TODD**, Boot and Shoe Maker.
- JOHN H. YOUNG**, Proprietor of Saw and Grist Mill.
- HENRY HENKE**, Blacksmith, Manufacturer of Plows, Wagons, Buggies and Farming Implements.
- HENRY D. FOLTZ**, Teacher.
- A. C. KILBIE**, Blacksmith, General and Fry L. PHOTO, Horse Shoes, Dealers in Thoroughbred Trotting Horses.
- J. M. KING**, Wagon Maker, and all kinds of Blacksmith work.

NORTH PALMYRA

T. 12 N. R. 8. W. of 3rd P.M.

Scale 2 Inches to the Mile



VIRDEN

Scale 500 ft to the Inch



VIRDEN REFERENCES.

S. B. WILCOX, Ex-Sherif.
A. L. VIRDEN, Dealer in Drugs and Medicines.
G. M. CHEIDSTER, Livery.
THE BANK OF VIRDEN, Will make Col-
 lections and remit promptly when paid. C. M.
 Walworth, Cashier.
VIRDEN RECORD, Only paper published in
 Virden. W. F. Thompson, Editor.
COWEN & CONY, Dealer in Staple and Fancy
 Groceries, Produce, Queensware and Glass-
 ware. West side Square. Established in 1864.
BALFOUR COWEN, Attorney at Law and
 Notary Public. Room 23, second floor, "Trit"
 Block."
L. HEGGANS, Manufacturer of Carriages and
 Wagons.
COX, HUTCHINSON & BALL, Manufac-
 turers of Buggies and Wagons.
J. W. UTTE, President of Coal Shaft.

CRAWFORD & LONG, Contractors and Builders.

GEORGE DORR, Dealer in all kinds of Furni-
 ture, Upholstery, Parlor Sets, Mirrors, Mat-
 tresses, Pictures, Frames, Coffins, etc.
CHAS. HUMPHREYS, Dealer in Furniture,
 Hardware, Stoves, Tinware, etc. East side
 Square.
CHAS. F. OETMANN, Baker and Confection-
 er. Dealer in heavy and Fancy Groceries.
M. B. JONES, Dealer in Lumber, Lath, Shingles,
 Doors, Sash, Blinds, Hair, Cement and
 Plaster Paris.
W. W. POST, Dealer in Hardware, Agricul-
 tural Implements, Stoves and Tinware.
J. W. ODENWALDER, Bakery, Restaurant
 and Confectionery.
SIMONS & SEWELL, Manufacturers of the
 best brands of Flour. Their motto is one
 price.
J. B. KENTON, County Supt. of Schools.

P. S. GREENE, Dealer in Watches, Jewelry, Clocks, Plated Ware, etc.

All work repaired and warranted to give entire satisfaction.
B. F. WIGGINTON, Dealer in Groceries and
 Country Produce. North side Square.
ALLEN & HILL, Machinists and Manufac-
 turers of Wagons, Carriages, Agricultural im-
 plements. All kinds of repairing done at short
 notice.
HENRY HILL, BR, Machinist and Black-
 smith work done at short notice.
E. A. STUART & CO., Manufacturer of the
 best brands of Flour. General custom work
 done.
VIRDEN JUNCTION HOTEL, and Office,
 with good Sample and Bath Rooms, first-class
 Tables and Beds, Library and Pleasure Grounds
 attached, and A No. 1 Livery next door, at 8
 per day, by W. H. Rowen.
WM. EMMERSON, Manufacturer of Wagons
 and Buggies, Farmer and Stock Raiser.

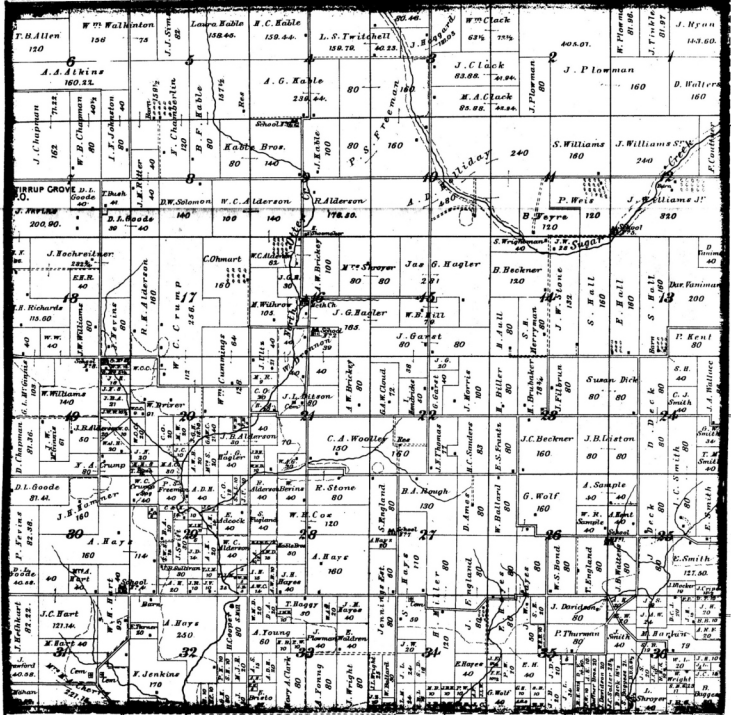
ROBERT ALTERSON, Farmer and Proprietor of "Farmers' House," located near Virden.

Depot (west). Price \$1 per day, or \$4
 per week.
MALLOM ROSS, Attorney at Law, Notary
 Public, and Real Estate Dealer and Agent.
 Office cor. Jackson and Church Streets.
JAMES LUBSDEN, Stone Mason, Mechanic
 and Farmer. (Retired).
BLOCKIE BILLOWAY, "Billoway House,"
 Private Boarding.
JOHN L. MOREBELL, Farmer, Surveyor, and
 Real Estate Agent.
VIRDEN TP. REFERENCES.
J. E. HENDERSON, Farmer, Stock Raiser
 and Dealer. (Entered his land at 93 cents per
 acre, in 1854.) Section 10.
ALBERT S. CRANE, Farmer, Stock Raiser,
 Buyer and Shipper. Section 8.

NORTH OTTER

Scale 2 inches to the M.

T. 12. N. 7. W. of 3rd R. M.

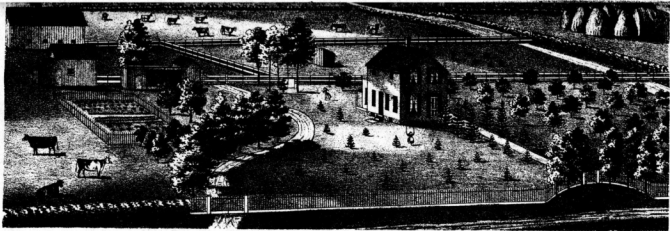


NORTH OTTER TOWNSHIP REFERENCED.

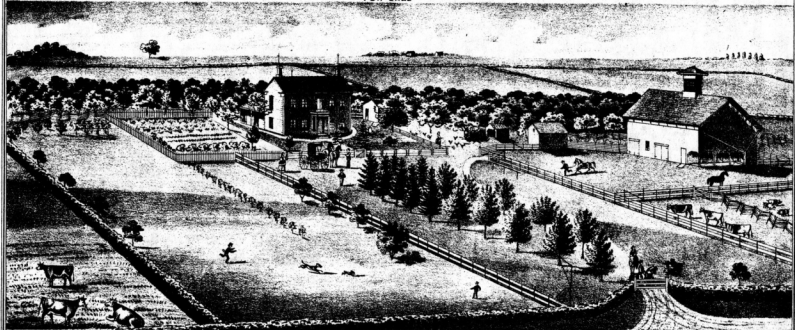
CHAR. M. WRIGHT, School Teacher.
 JOHN M. YOWELL, Farmer and Miller.
 W. H. HART, Farmer and Justice of the Peace.
 Section 31.



RESIDENCE OF M. R. FLINT, CARUNVILLE, ILL.



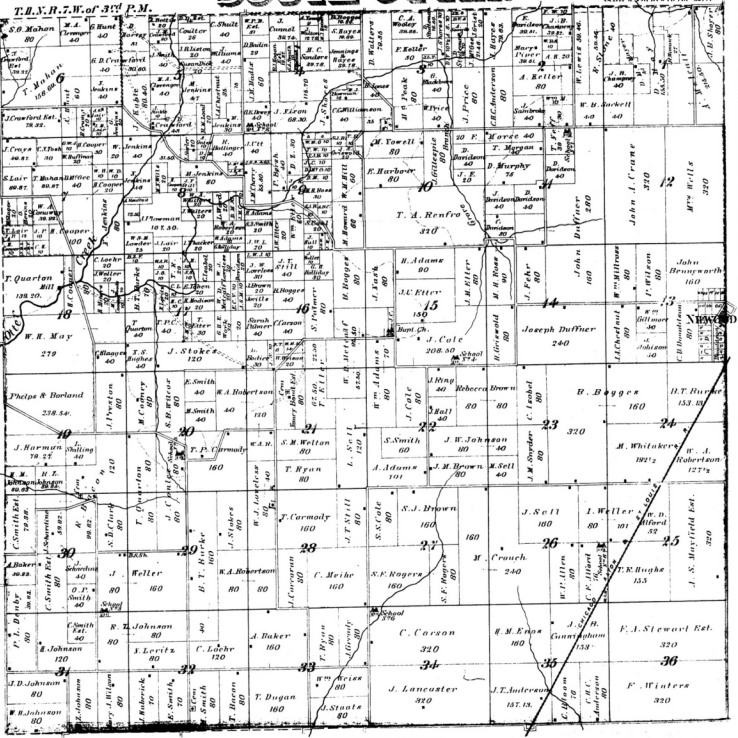
FARM RESIDENCE OF WM. LOVE, BUNKER HILL T. MACOUPIN CO. ILL.
FOR SALE



FARM RESIDENCE OF SAMUEL J. WILLIAMS, GILLESPIE T. MACOUPIN CO. ILL.

SOUTH OTTER

Scale 2 inches to the Mile



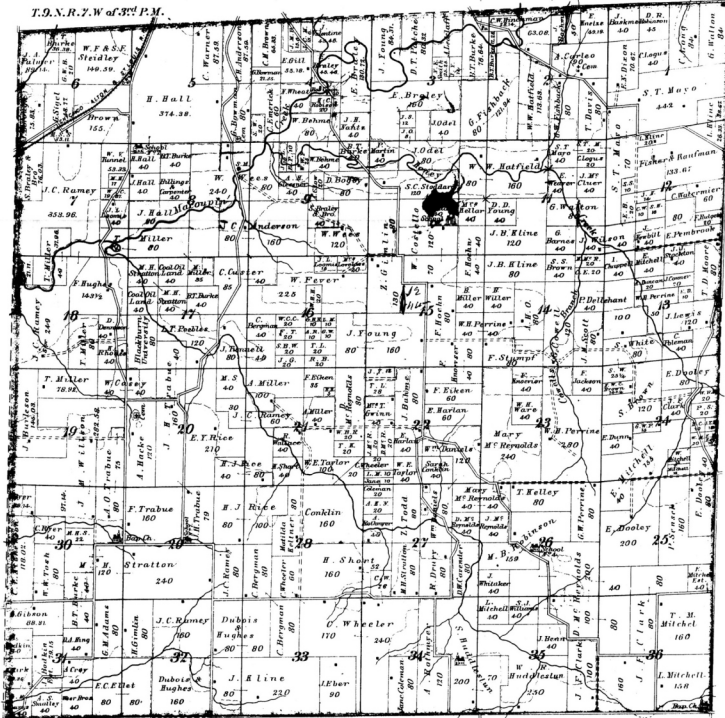
SOUTH OTTER TOWNSHIP REFERENCES.

WOODFORD NEIGHBOURE, Farmer and Blacksmith, Section 30.
ORSON F. SMITH, Farmer of Smith & Miller's Framing Shanty, Section 30.
THOMAS MAHAN, Town Collector, Town and School Trustee, Trustee of the Christian Church.

BRUSHY MOUND

Scale 2 inches to the Mile

T.O.N.R.Y.W. of 3rd P.M.



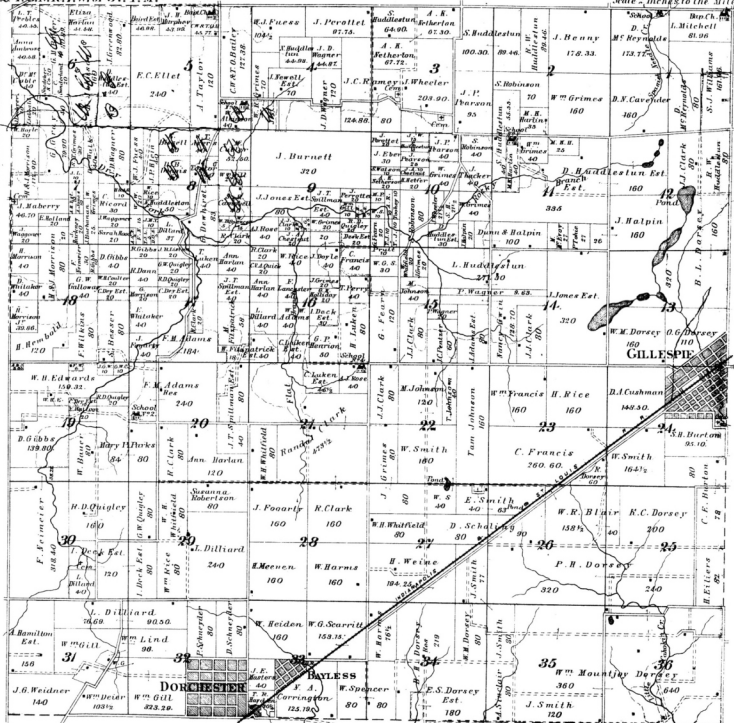
BRUSHY MOUND TOWNSHIP REFERENCES.

LEVI MITCHELL, Minister Baptist Church,
Farmer and Stock Dealer, Section 36.
AUGUST HACKE, Farmer, Stock Dealer and
Justice of the Peace, Section 22.

GILLESPIE

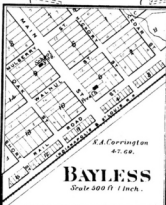
T. N. R. Z. W. of 1914 P. M.

Scale 2 inches to the Mile



GILLESPIE REFERENCES.

- T. WARREN FLOYD**, Physician and Surgeon. Drugs, Medicines, Books and Stationery.
- HERMANN BEHRENS**, National Hotel.
- HENRY H. BEHRENS**, Dealer in Dry Goods, Groceries and General Merchandise.
- ABRAHAM FREY**, Harness Maker, School Director.
- PETER J. AHRENS**, Dealer in all sorts of Dry Goods, Groceries, Boots and Shoes.
- MRS. Z. L. MILLER**, Millinery and Notions, consisting in part of all the latest styles of Bonnets, Hats, Ribbons, Laces, Embroideries, etc. Hats trimmed and made to order. Particular attention given to Dress Making. Call and see my goods and examine my prices.
- ROBERT BROWN**, Justice of the Peace and Tailor.
- CHARLES LISTER**, Boot and Shoe Shop.



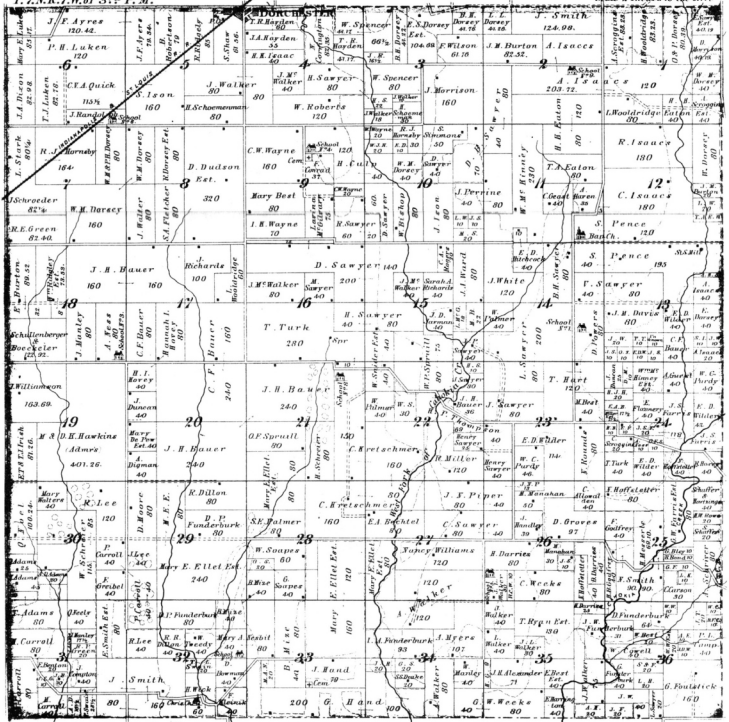
BAYLESS
Scale 300 ft. 1 inch.

- CENTRAL HOTEL**, M. J. Smith, Proprietor.
- THOMAS ROSE**, Blacksmith, Wagon and Shoe Maker. Wagons and Buggies made to order. Shoring neatly done. Custom work a specialty.
- JOHN FOSTER**, Engineer of City Mill.
- M. C. PARSONS**, Miller.
- CHAS. FITZGERALD**, Hardware and Stoves. Repairing neatly done on short notice.
- E. CRUTTENDEN**, Wagons, Buggies and all wood work belonging to the business. Repairing done with neatness and dispatch; also Undertaker's business. Coffins of all sizes neatly trimmed on short notice at lowest cash price.
- MARY A. PORTER**, Wash Mrs. Murphy in Millinery Store.
- H. MEINECKE**, Proprietor of California House. Good Sample Rooms.
- ANTHONY W. CROWDER**, House, Sign and Baggy Painting.

DORCHESTER

T. 7. N. R. 7. W. of 31st P. M.

Scale 2 Inches to the Mile



DORCHESTER REFERENCES

DILLIARD & SON, Dealers in Drugs, Groceries, Dry Goods, Glassware, Notions, Paints, Oils, Putty, Window Glass, Varnishes, Perfumery, Toilet Goods, etc. Prescriptions carefully prepared all hours day and night.

C. H. BLACK, M.D., Physician and Surgeon.

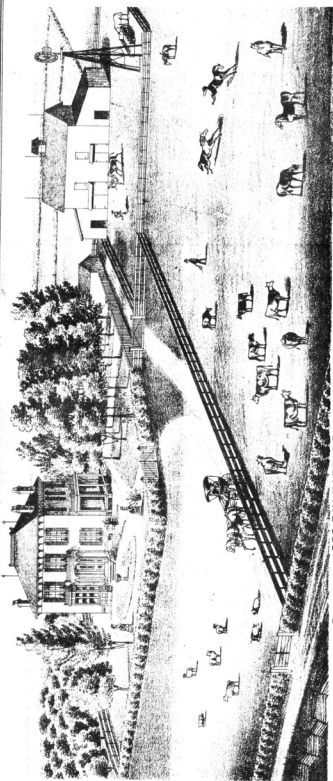
JOHN T. YOUNG, Grain Dealer.

G. W. SCHMIDT, Manufacturer of Wagons, Buggies, Sleighs, etc. Dealer in Farming Implements, and anything belonging to the agricultural department.

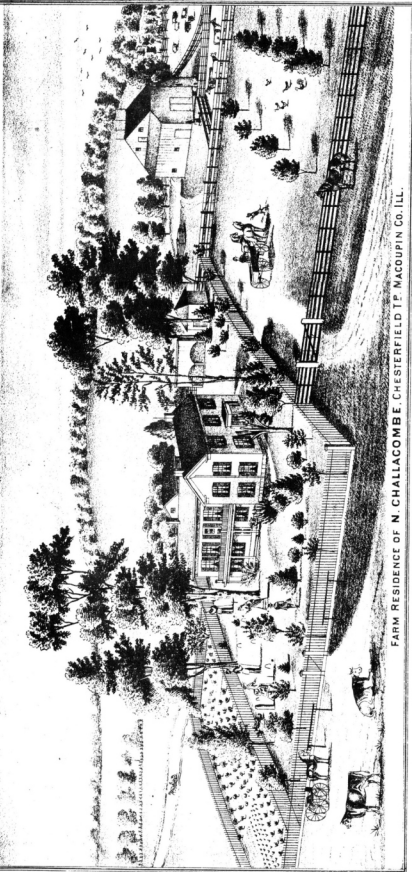
JOSEPH FROTO, Blacksmith and Horse Shoeing. All custom work promptly and neatly done.

W. T. KEAS, Postmaster and Real Estate Agt.

J. T. DE BAUN, Notary Public, Real Estate Agent and Surveyor.



RESIDENCE OF GEO. F. W. HARRIS, BUNKER HILL TP., WOODBURN P.O., MACOUPIN CO., ILL.

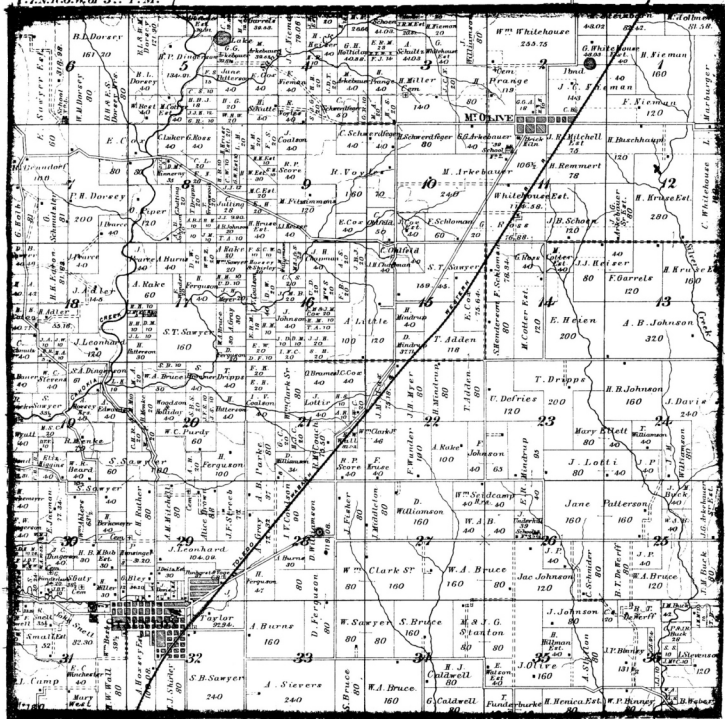


FARM RESIDENCE OF N. CHALLACOMBE, CHESTERFIELD TP., MACOUPIN CO., ILL.

STAUNTON

T. 7. N. R. 6. W. of 3^d P. M.

Scale 2 inches to the Mile



STAUNTON TOWNSHIP

REFERENCES

- CLARK BROTHERS, Farmers and Stock Raisers. Section 27.
 F. M. HENDERSON, Farmer and Teacher. Section 14.
 JACOB BUB, Farmer and Dairyman. Section 28.
 HENRY VOGEL, Proprietor of Coal Mine and Dealer in Coal. Section 29.
 ROBERT SNELL, Farmer and Stone Quarryman. Section 31.



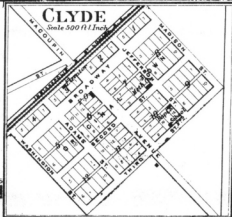
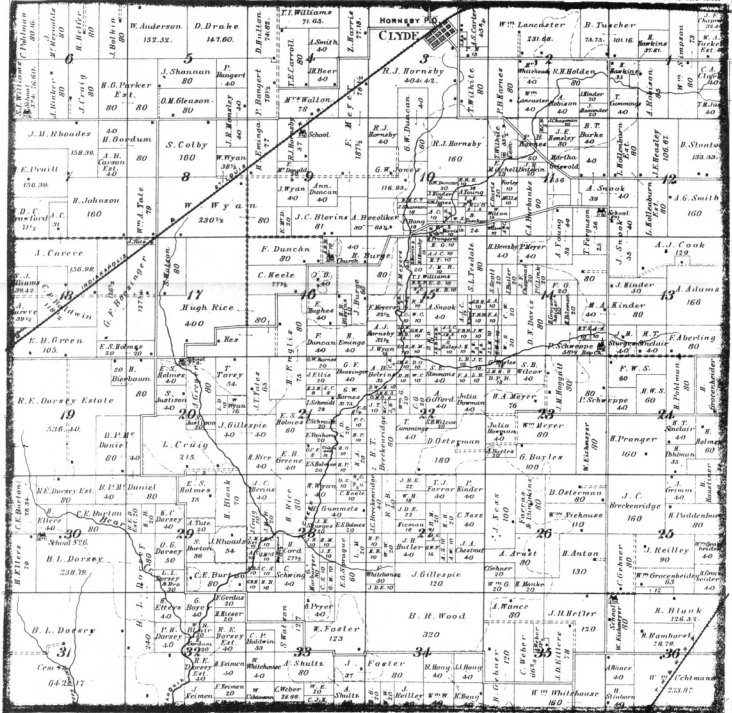
MT. OLIVE REFERENCES.

- NIEMAN & KEISER, Dealers in General Merchandise, Groceries, Staple and Fancy Dry Goods, Ready Made Clothing, Hats, Caps, Boots, Shoes, Hardware, Queensware, Furniture, Calicoes, Hanning Implements.
 C. J. KEISER, Postmaster, Railroad and Express Agent.
 W. NIEMEYER, Salesman with Nieman & Keiser.
 HENRY ALBERS, Proprietor of Saloon.
 HAREET J. KEISER, Teacher in German, Music, etc.
 CHRIST NIEDERMEHR, Manufacturer of Wagons, Spring Wagons, Suggies, Plows, Harrows, and all kinds of Farming Impl'ts.

CAHOKIA

T.B.N.R.6.W. of 3^d P.M.

Scale 2 Inches to the Mile

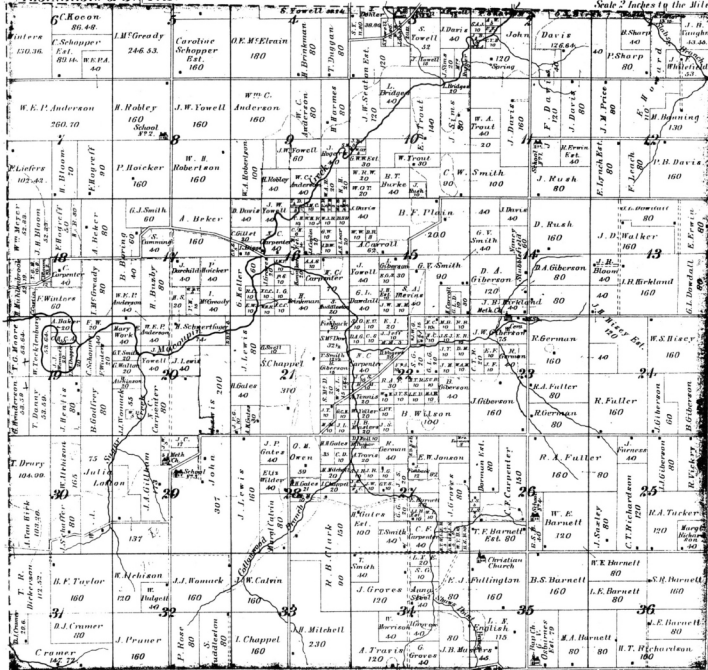


CLYDE REFERENCES.
A. J. COOK, Farmer, Township Collector and Justice of the Peace.
H. B. BLEVINS, Farmer, Township Assessor and School Teacher, Section 16.

SHAWS POINT

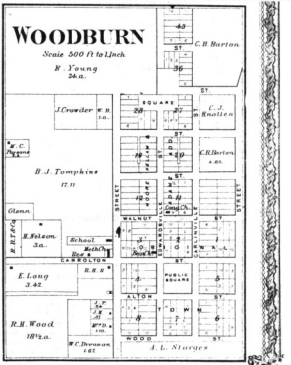
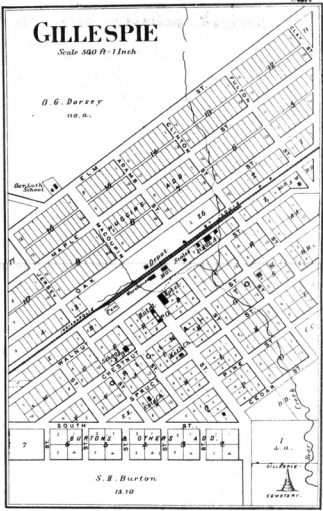
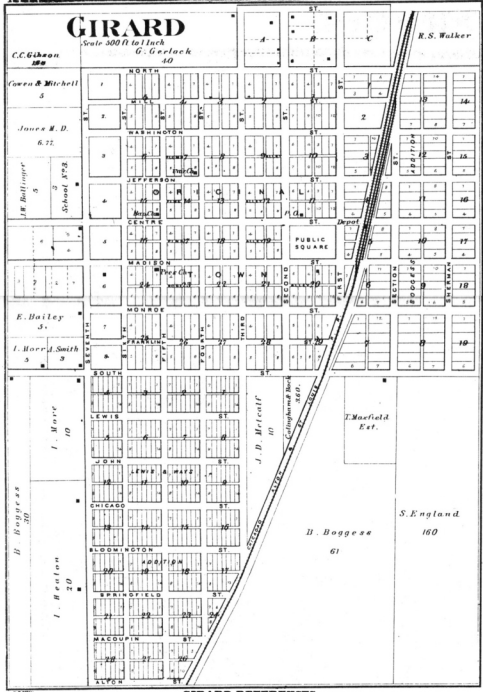
T. 10. N. R. 6. W. of 1st P. M.

Scale 2 inches to the Mile



SHAWS POINT TOWNSHIP REFERENCES

GEO. F. GROTTEN, Mechanic. Section 13.
 C. D. BUFFINGTON, Homopathic Physician. Office at residence of MASTERS.
 C. J. MARCH, School Teacher. Section 2.



GIRARD REFERENCES.

- WM. LANCASTER**, Manufacturer of Brick and Mill.
- IRAAC BEATON**, Manufacturers of Carriage, R. FISH, Triggs, Wagons, Farming Implements, and all kinds of Machinery, Blacksmithing.
- MAEKNER, METCALF & FLOOD**, Dealers in Lumber, Lime, Cement, Pumps and Agricultural Implements. Office and Warerooms N.E. corner Square.
- R. J. MITCHELL**, Physician and Surgeon.
- C. C. ARMSTRONG**, Dealer in Hortensia Colerated Stomach Bitters, Drops, Medicines, Chemicals, Fancy Toilet Soaps, Fancy Hair and Tooth Brushes, and every thing usually kept in a first-class Drug Store. West side Square.
- GIRARD REVIEW**, Established 1874.
- NILWOOD JONES & Co.**, Established 1874. W. E. Milton, Publisher. Subscription \$1.50 each, in advance.
- L. J. THOMPSON**, Dealer in Dry Goods, Boots, Shoes, Hats, Caps, Ready Made Clothing, and a full line of Millinery Goods, Jewellery, Notions, etc., etc.
- MICHAEL BROWN**, Carpenter and Joiner.
- T. F. BURNETT**, Manufacturer of Wagons, Carriages and Farming Implements.
- F. WILLET**, Merchant Tailor.
- M. M. DUNGAN**, Attorney at Law, Justice of the Peace, General Collecting, Real Estate and Fire Insurance Agent.
- S. W. GOBBLE**, Dealer in Family Groceries, Confectionery, Glass and Queensware, Perfumery, etc.
- CARR & LOWE**, Dealers in Mens, Boys and Youths Clothing, Gents Farming and Fancy Goods, Hats, Chicago Custom Made Boots, etc.
- M. V. KITZMILLER**, Proprietor of Girard Nursery, Dealer in Fruit and Ornamental Trees, Vines, Plants, etc.
- J. D. METCALF & CO.**, Groceries and Drugs.
- BANK OF GIRARD**, J. D. Metcalf, Pres.; R. T. Andrews, Cashier; H. C. Hamilton, Assistant Cashier.
- GEO. DODM**, Manufacturer of Boots and Shoes, Dealer in Hides.
- W. C. THOMPSON**, Dealer in Furniture, Wall Paper, Window Shades, etc.
- BOCK & COTINGHAM**, Dealers in Meats of all kinds, Hides, Tallow, Pails, etc.

